



دکرهڼی ، اوبولنگولو او مالدارۍ وزارت
وزارت زراعت ، آبیاری و مالدارۍ

دافغانستان اسلامي جمهوریت
جمهوری اسلامی افغانستان

Islamic Republic of Afghanistan
Ministry of Agriculture, Irrigation and Livestock



AGRICULTURE PROSPECTS REPORT



Ministry of Agriculture, Irrigation and Livestock
General Department of Policy and Planning
Statistics and Marketing Information Office

Kabul, 26 May 2010

Abbreviations

APR	Agriculture Prospects Report
DAP	Diammonium Phosphate
EU	European Union
FAO	Food and Agriculture Organization of the United Nations
FMD	Foot and Mouth Disease
MAIL	Ministry of Agriculture, Irrigation and Livestock
PPR	peste des petits ruminants
USDA	United States Department of Agriculture
USGS	United States Geological Survey
WFP	World Food Program

Acknowledgement

Main sources of updated data in this report are over 4,000 farmers, provincial agricultural offices of 34 provinces, and the technical departments of MAIL. Many thanks are due to farmers, projects, agencies and individuals for their help. MAIL appreciates contributions made by them in providing real time information and data. Thanks are also due to many others who contributed towards field work and/or helped with the writing of this report.

*Cover photo: Improved Irrigated Wheat in Laghman Province District, Qarghaee.
Photo by: Tahir Yadgari, MAIL Counterpart staff*

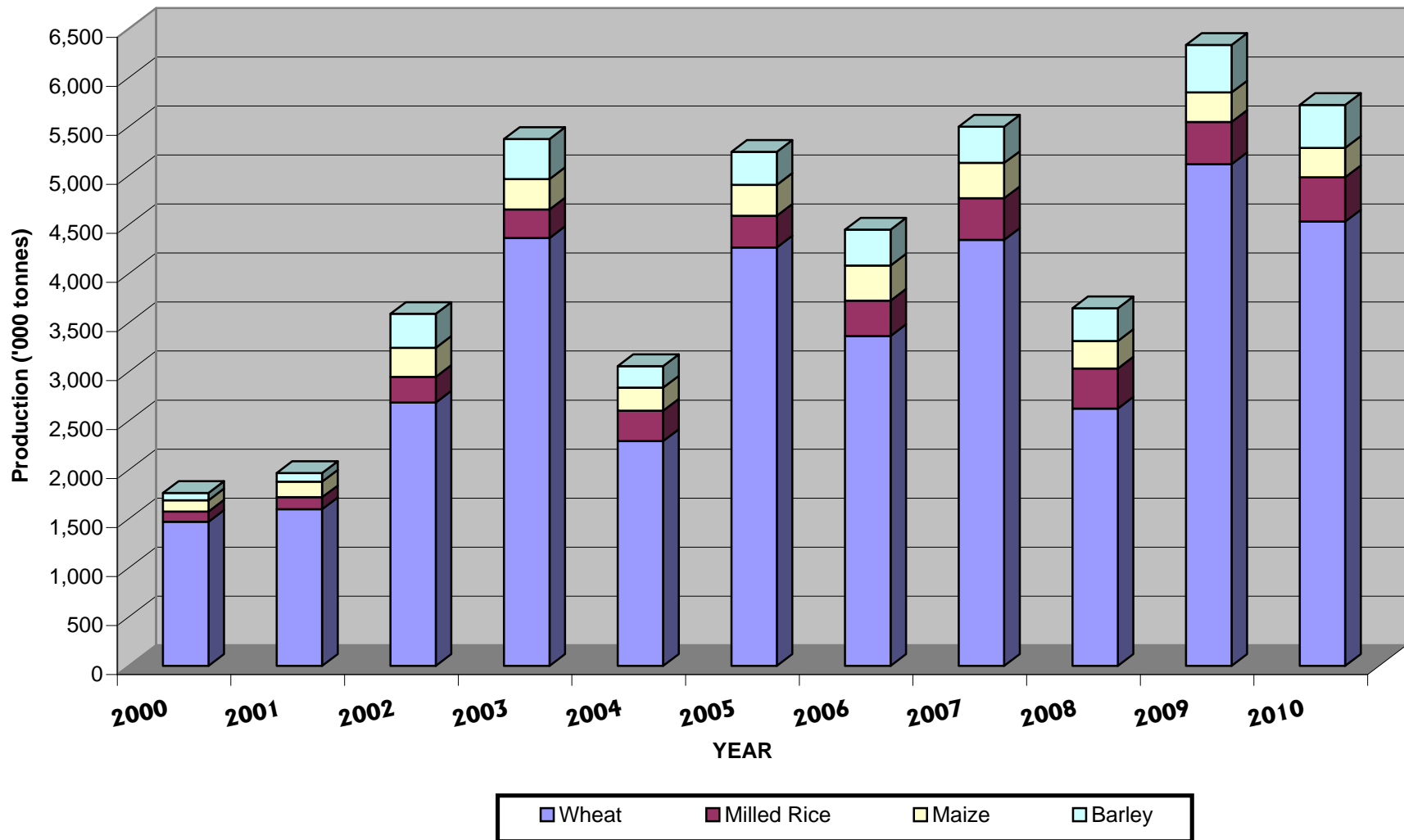


"Strengthening Agricultural Economics, Market Information and Statistics Services" (GCP/AFG/063/EC)

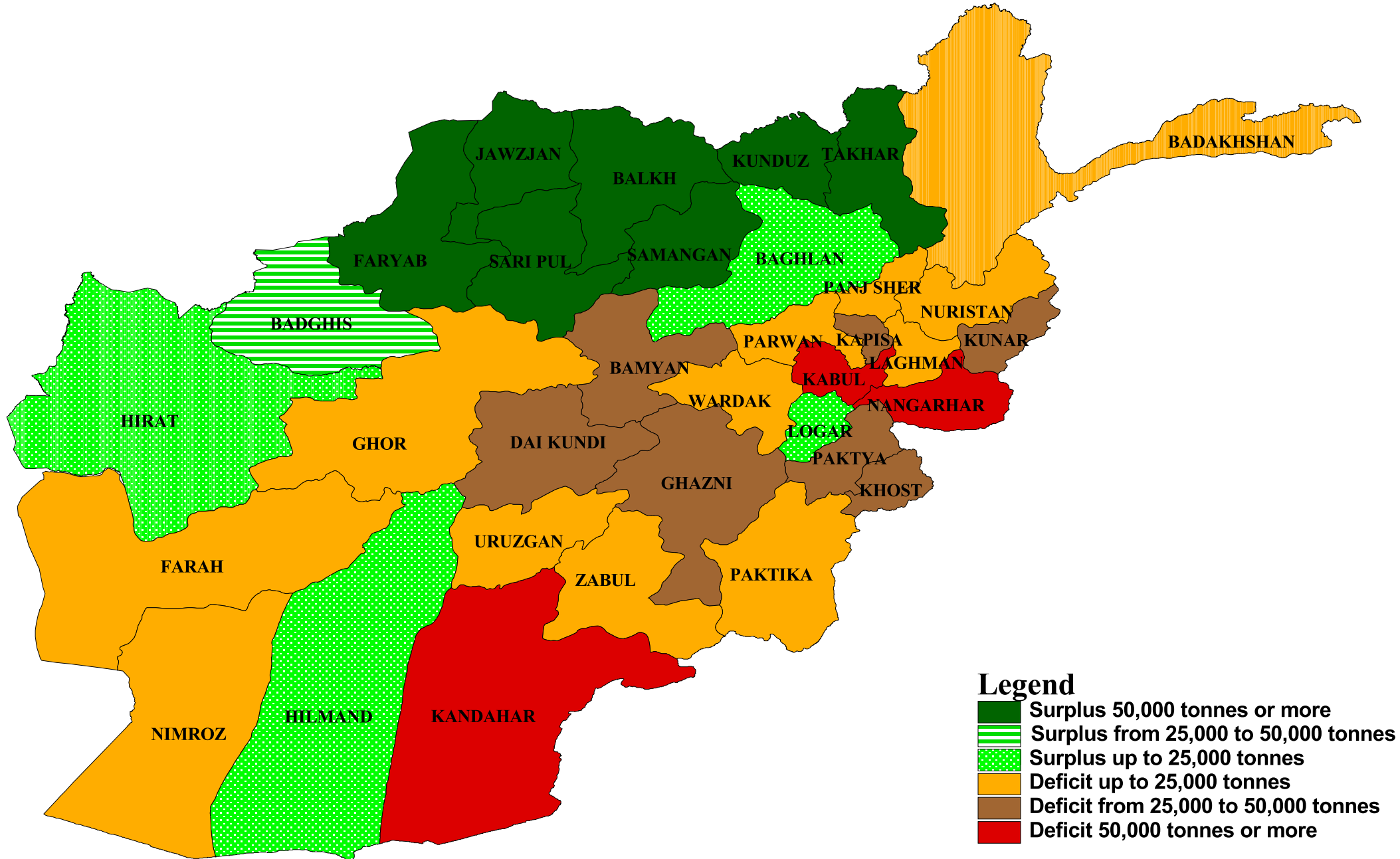
The EU-funded project mentioned above provided technical guidance and financial support for the production of this report.

*Price bulletins and other reports produced by the project are available at:
<http://www.mail.gov.af/m/english/English.htm>
http://www.fao.org/world/afghanistan/agteo_en.htm*

Afghanistan Cereal Production (2000-2010)



Wheat Balance in 2010



CONTENTS

Map 1: Afghanistan Cereal Production (2000-2010)

Map 2: Wheat Balance by Province in 2010 (Preliminary estimates)

1. INTRODUCTION	1
2. WEATHER AND CROP CONDITION.....	2
A. WEATHER DATA	2
B. GROUND TRUTH DATA.....	2
3. CEREAL AREA, PRODUCTION, REQUIREMENT AND DEFICIT	2
4. ADVERSE FACTORS.....	4
5. PRICE OF AGRICULTURAL COMMODITIES	5
6. REMARKS AND CAVEAT	6

Tables

- 1: Forecasted Area and Production of different Cereals in 2010
- 2: Percent changes in the 2010 wheat area, yield and production compared to 2009
- 3: Cereal production in Afghanistan (2003-2010) ('000 tonnes)
- 4: The 2010 Cereal Balance Sheet ('000 tonnes)
- 5: Consumer Price Index in April 2010

Annex

- 1 Rainfall amount (mm) in the current season compared to the Long-Term Average (LTA)
- 2 Wheat seed produced by the FAO seed project (2003-2009)
- 3 Area and Production of wheat in 2010 by province (preliminary estimates)
- 4 Wheat Balance in 2010 by province (preliminary estimates)
- 5 Production and requirements of various cereals in 2010
- 6a Adverse conditions of crops
- 6b Adverse conditions of livestock
- 6c District codes used in Annex 6a and Annex 6b
- 7 Progress under plant protection
- 8 Normalized Difference Vegetation Index in 21-30 April of 2010 compared to average
9. Agricultural prices

Ministry of Agriculture, Irrigation and Livestock
General Department of Policy and Planning
Statistics and Marketing Information Office

Agriculture Prospects Report (APR)

1. Introduction

Crop assessment missions to 34 provinces were commissioned by MAIL in April and May. MAIL at Kabul fielded crop assessment missions to the following 24 provinces:

- North Faryab, Juzjan, Sar-i-Pul, Balkh, Samangan (5 provinces)
- North-East Bughlan, Kunduz, Takhar, and Badakhshan (4 provinces)
- West Herat and Badghis (2 provinces)
- West Central Bamyan (1 province)
- Central Kabul, Parwan, Panjsher, Kapisa, Logar and Wardak (6 provinces)
- South Paktya and Khost (2 provinces)
- East Nangarhar, Laghman, and Kunarha (3 provinces)
- South-West Daikunde (1 province)

In addition, with the help of Provincial Offices of MAIL (DAIL) and Regional Field Assistants (RFA) of FAO posted in Kunduz, Herat, Kandahar and Jalalabad, MAIL undertook crop assessment in the following, remaining 10 provinces also:

- West Farah (1 province; RFA Herat)
- West Central Ghor (1 province; RFA Herat)
- South Paktika and Ghazni (2 provinces; RFA Kandahar)
- East Nuristan (1 provinces; RFA Nangharhar)
- South-West Kandahar, Helmand, Zabul, Nimroz and Uruzgan (5 provinces; RFA Kandahar)

This report provides preliminary estimates of the 2010 cereal crop outputs and cereal surplus/deficit, based mainly on above-mentioned missions' findings. The MAIL and DAIL missions held discussions with the provincial and district staff. They collected provincial level information and data on crop area/production, livestock condition and adverse factors (e.g. drought, floods, avalanche, frost, pests, diseases, etc.). The missions interviewed over 4,000 farmers across 34 provinces. The 34 MAIL/DAIL assessment missions submitted semi-processed reports by the third week of May. These reports were quickly processed at MAIL for analysis, interpretation and report writing.

This APR is based on (i) updated assessment reports collected from DAIL, (ii) the results of the farmers' survey, (iii) historical data sets and (iv) information and data from other sources. As the primary aim of the assessment is to produce consistent official data, emphasis is laid more on the use of relative data reported by DAIL, farmers and others. For example, for validation and consistency checks, missions' data were compared with the benchmark crop data of 2003 and 2009, and with other historical data sets and the latest rainfall amount/pattern and satellite maps. Technical departments of

MAIL in Kabul and in the provinces provide a wealth of information on current crop and livestock situation. Information and data provided by FAO projects, FAO area offices and units, USGS Agromet project, FEWS NET, WFP, and FAO missions were also important sources of information for this APR.

2. Weather and crop condition

a. Weather data

All areas of the country with the exception of some parts of the eastern and south-western regions experienced good amount of rainfall in November 2009. The rainfall amount in December 2009 was also above normal in all but some parts of the eastern and central regions. The amount and distribution of rainfall in January 2010 was not enough for optimal growth and development of crops and pasture. However, all parts of the country experienced very good amount and distribution of rainfall in February 2010. Rainfall amounts in March and April 2010 were also satisfactory in the main crop growing areas. (Annex 1)

Normalized Difference Vegetation Index (NDVI) in the period 21st-30th April is presented in Annex 7. The map confirms that, for most parts of the country, there is above average density and greenness of the plant and pasture canopy in end-April 2010. Reports from the field also suggest that the weather condition in May is generally very favorable to the standing crops.

b. Ground truth data

Towards the end of January, overall condition of the winter crops was not so good. However, from the first week of February, weather condition in most parts of the country was highly satisfactory for planting, growth and development of the winter cereal crops. The weather condition in that period benefited spring planting of crops and pasture also. Thanks to the weather conditions in February, majority of the intended area for irrigated winter wheat and barley was planted. The planting of rainfed wheat also progressed very well and the winter crops revived in all parts of the country dramatically.

The results of the provincial reports/feedback and farmers' interviews suggest that a reasonably good cereal harvest will be reaped this year. Both irrigated and rainfed crops are in good conditions so far. The factors that contributed towards reasonably good cereal production prospects in 2010 are:

- (i) satisfactory rainfall pattern, especially in the beginning and the later part of the season
- (ii) increased use of improved seeds¹ and chemical fertilizers
- (iii) effective and timely control of pests and diseases

3. Cereal Area, Production, Requirement and Deficit

The average annual cereal production of Afghanistan in the last 5 years (2005 to 2009) was 5.2 million tons. Overall cereal production in 2010 is estimated to be 5.7 million tons, which is 10% below the last year's level of 6.3 million tons, but 11% higher than the average level.

The total area with the cereals in 2010 is estimated at 3.1 million hectares. The forecast for cereal production in 2010 is 5.7 million tons, which includes wheat 4.5 million tonnes (79%) and barley

¹ Details on the amount of improved wheat seed produced by FAO Seed Project are shown in Annex 2

450,000 tons (8%). Paddy and maize will be cultivated later in the year. Assuming normal planting/growing conditions for paddy and maize, production forecasts for rice and maize in 2010 are 450,000 tons and 301,000 tons, respectively. (Table 1)

**Table 1: Forecasted Area and Production of different Cereals in 2010
(Preliminary estimates)**

Crop	Area (‘000 ha)	Yield (ton/ha)	Production (‘000 tons)
Irrigated wheat (Winter & Spring)	1,151	2.68	3,082
Rainfed wheat (Winter & Spring)	1,353	1.07	1,450
All wheat	2,504	1.81	4,532
Rice	200	3.36	450
Maize	140	2.15	301
Barley	270	1.62	437
Overall	3,114		5,720

The area planted with irrigated wheat in 2010 is at par with the corresponding area planted last year. The area planted with rainfed wheat/barley is 5% lesser than the last year. The yield prospects of cereals in irrigated areas are generally good. The yield prospects of cereals planted in rainfed areas are also satisfactory in main growing areas (North, North-East and West). There are reported cases of some damages caused to agricultural production and infrastructure due to the floods, particularly in the North-Eastern, Northern, Western and Central regions. (Table 2)

Compared to 2009, decreases in wheat area and yield are estimated at 2.8% and 8.1%, respectively. As a result of these decreases, wheat production in 2010 is expected to be 10.5% lower than in 2009.

Table 2: Changes in the 2010 wheat area, yield and production compared to 2009

Crop	2009			2010			% change in 2010 on 2009		
	Area	Yield	Prod	Area	Yield	Prod	Area	Yield	Prod
Irrigated wheat	1,149	2.95	3,387	1,151	2.68	3,082	0.2	-9.2	-9.0
Rainfed wheat	1,426	1.18	1,677	1,353	1.07	1,450	-5.1	-9.3	-13.5
All wheat	2,575	1.97	5,064	2,504	1.81	4,532	-2.8	-8.1	-10.5

Year to year changes in the production levels of cereals in the last eight years are shown in Table 3. The 2003, 2005, 2007 and 2009 were years with very good cereal harvest mainly due to favorable weather conditions. In 2002, 2004, 2006 and 2008 cereal production dipped considerably down due to the drought. In fact, as can be seen below, this is the first time in recent years that the country is expected to have good cereal crop harvests in two consecutive years.

Table 3: Cereal production² in Afghanistan (2002-2010) ('000 tonnes)

Crop	2003	2004	2005	2006	2007	2008	2009	2010
Irrigated wheat	3,017	1,867	2,728	2,604	2,878	2,406	3,433	3,082
Rainfed wheat	1,345	426	1,538	759	1,465	217	1,682	1,450
All wheat	4,362	2,293	4,266	3,363	4,343	2,623	5,115	4,532
Milled rice	291	310	325	361	425	410	432	450
Maize	310	234	315	359	360	280	300	301
Barley	410	220	337	364	370	333	486	437
Total cereals	5,373	3,057	5,243	4,447	5,498	3,646	6,333	5,720

The total cereal requirement in 2010 is estimated at 6.5 million tonnes. The cereal deficit in 2010 is estimated at 753,000 tons³, which includes 700,000 tonnes of wheat and 53,000 tonnes of rice. (Table 4) This deficit in 2010 will have three usual components: commercial import⁴, imported food aid, and uncovered deficit.

Table 4: The 2010 Cereal Balance Sheet ('000 tonnes)

Crop	Requirements					Domestic production	Surplus/ Deficit
	Food	Seed	Feed	Loss	Total		
Irrigated wheat		201	--	462		3,082	
Rainfed wheat		111	--	218		1,450	
All wheat	4,240	312	0	680	5,232	4,532	-700
Rice	450	21	0	32	503	450	-53
Maize	53	8	195	45	301	301	--
Barley	26	30	315	66	437	437	--
Total	4,769	371	510	823	6,473	5,720	-753

4. Adverse Factors

Annex 6a and Annex 6b show details on adverse factors affecting crops and livestock production systems in 2010. The purpose in the annexes is to record adverse factors by district for interventions and actions. The progress towards the control campaign against various pests in the following areas was highly satisfactory. (Annex 7):

- **Locust:** Faryab, Jawzjan, Sar-e-pul, Balkh, Samangan, Baghlan, Kunduz, Takhar, Badakhshan, Herat, Badghis, Ghor, Bamyan, Kabul, Logar, Wardak and Nangarhar (17 provinces)
- **Sunn pest:** Jawzjan, Sar-e-pul, Balkh, Samangan, Herat, Faryab, Badghis, Ghor and Helmand (9 provinces)

² Sources: FAO/WFP Food and Crop Assessment Mission for 2003 and 2004; MAIL 2005-2010

³ This assumes "carry-in -stock (from 2009)" = "carry-over stock (to 2011)".

⁴ It usually has three-fourth share in narrowing the deficit

- **Brown tail moth:** Balkh, Takhar, Badakhshan, Farah, Bamyan, Kabul, Parwan, Panjshir, Kapisa, Maidan Wardak, Ghazni, Nooristan and Daikundy (13 provinces)
- **Colorado Potato Beetle:** Samangan, Baghlan, Kunduz, Takhar, Badakhshan, and Bamyan (6 provinces)
- **Melon fly:** Jawzjan, Sar-e-pul, Balkh, Samangan, Baghlan, Kunduz, Takhar, Badakhshan, Herat, Faryab and Badghis (11 provinces)

The control campaign against pests faced tight constraints on timely availability of funds. In addition, Provincial Plant Protection Departments could not implement some of the intended control measures in relatively insecure areas⁵.

5. Price of Agricultural Commodities

National Consumer Price Index (CPI)⁶ in April 2010 was 1.1 percent point lower than in April 2009. The annual drop in the national food index was 6.4 percent points. Among the food items, annual drop in the “Bread and Cereals” index was 20.7 percent points, which was mainly due to a fall in the price of wheat in local markets. However, the price index of meat increased by 5.7 percent points. The “non-food index” increased by 7.4% in the said period.

Table 5: CPI in April 2010 compared with CPIs in April 2009 and March 2010

Description	Percent point change in April 2010 CPI	
	On Apr 2009	On Mar 2010
	(on last year)	(on last month)
OVERALL INDEX	-1.1	1.1
Food Index	-6.4	1.0
Bread and cereals	-20.7	1.7
Meat	5.7	1.3
Milk, cheese and eggs	-0.3	0.8
Oils and fats	5.0	1.5
Fresh and dried fruits	2.5	-1.6
Vegetables including tubers	8.7	2.7
Sugar and sweets	27.2	-5.3
Spices	-1.0	-0.7
Non-alcoholic beverages	5.4	0.3
Cigarettes and tobacco	7.8	0.4
Non-food Index	7.4	1.2
Exchange rate Index	-6.0	0.2

Source: Central Statistics Organization (CSO)

⁵**Kunduz:** Most villages of Archi, Chahar Dara, Imam Saheb, Alibad and Khan Abad districts and behind Irganak pass. **Baghlan:** Most of Central Baghlan villages such as Aabqul, Azim Shor, Kharkhor, Dasht-e-gabr, Laiqah, Bayesqal and Dahana-i-ghori district. **Samangan:** the most villages of the province center such as Tikhunak, Dasht-e-khair Abad and their vicinities. **Balkh:** Most villages of Khulm, Chaharbolak and Chental

⁶Consumer Price Index (CPI) is an index of the price of consumer goods and services. It can be used to measure the rate of inflation or the cost of living.

Overall CPI increased by 1.1 percent point from March to April 2010, with an increase in the food index by 1.0 percent point and the non-food index by 1.2 percent point. “Bread and cereal” index showed an increase of 1.7 percent point in that one month’s period. (Table 5)

The national average price of wheat in April was Afs 13.9 Afs/kg, with annual and monthly decreases of 30% and 6%. The average price of local wheat in the second week of May was Afs 13.5/kg, which exhibited a further negative (-3%) trend. The price decreases are significant in main cereal surplus areas in the country. In this connection, there are reported cases of some wheat export from such areas.

Summarized prices of agricultural commodities are shown in Annex 9. Detailed analysis of the prices can be found in “Agricultural Commodity Price Bulletin”⁷ issued by MAIL on the 17th May.

6. Remarks and Caveat

Overall conditions of cereal crops, horticulture, animal health and animal production are satisfactory this year. A consistent picture that came through clearly is the fact that there is a significant increase in area planted with fruit trees.

The data presented in this report mirror the crop conditions up to the second week of May. The crop estimates are progressively adjusted by MAIL as and when updated information is available from internal or external sources. The damages caused by all adverse factors up to the second week of May have been taken into account in the report. Bulk of irrigated wheat and barley harvest will have been reaped only by July. All of the standing crops – rained crops, in particular - have substantial water requirements in the coming months, when they will be undergoing grain filling, maturity and harvesting stages. Some information - such as adverse effects of pests, diseases, floods, etc. on crops - may change rapidly as they happen and/or as more facts become known. Hence, a normal condition in the coming months is a key to achieving cereal crop production level presented in the report.

Some data sets presented in this report, such as data on extent of damages caused by pests and diseases on crop and livestock (Annex 6), are indicative and should be used with caution.

MAIL conducts annual probability sample surveys for bringing improvements in the reliability of wheat and paddy yield data. As regards this, wheat yield surveys have been already undertaken in the three provinces of the eastern region (Nangarhar, Laghman and Kunarha) and similar surveys will be commissioned in 8 provinces of other regions. Updated information and the results of the sample surveys will be used in the next issue of the APR, which will be issued in October, when the production levels of paddy and maize will also be known.

⁷ <http://www.mail.gov.af/m/english/English.htm>
http://www.fao.org/world/afghanistan/agteo_en.htm

Annex 1: Rainfall amount (mm) in the current crop growing cycle compared to the Long-Term Average (LTA)

Region	Province	Station	Nov LTA	Dec LTA	Jan LTA	Feb LTA	Mar LTA	Apr LTA	Nov 09 Actual	Dec 09 Actual	Jan 10 Actual	Feb 10 Actual	Mar 10 Actual	Apr 10 Actual	Rainfall amount compared to LTA (%)					
															Nov 09	Dec 09	Jan 10	Feb 10	Mar 10	Apr 10
North	Faryab	Maimana	28.0	35.0	47.9	55.8	83.9	65.0	78.0	56.0	14.0	39.0	81.0	31.0	279	160	29	70	97	48
North	Juzjan	Sheberghan	15.0	29.0	34.8	26.5	41.3	37.1	33.2	36.3	17.2	84.7	32.9	18.5	221	125	49	320	80	50
North	Sari Pul	Sari Pul	0.0	0.0	89.0	18.3	10.9	6.1	34.5	13.5	15.0	62.0	36.0	19.0	>100	>100	17	339	330	311
North	Balkh	Mazar	11.0	21.0	28.9	37.9	46.8	37.6	40.0	69.0	6.0	107.0	45.0	36.0	364	329	21	282	96	96
North East	Baghlan	Baghlan	24.0	23.0	41.3	41.8	84.1	75.2	54.6	39.3	5.0	40.0	38.0	44.2	228	171	12	96	45	59
North East	Kunduz	Kunduz	26.0	36.0	50.5	56.9	69.2	40.7	25.5	51.9	6.2	66.9	41.7	31.3	98	144	12	118	60	77
North East	Takhar	Taluqan	0.0	0.0	77.8	78.1	131.1	119.3	76.0	40.0	8.0	99.5	46.5	55.5	>100	>100	10	127	35	47
North East	Badakshan	Faiz Abad	29.0	32.0	45.5	63.0	98.2	99.2	67.5	51.5	34.0	138.0	105.5	52.0	233	161	75	219	107	52
West	Herat	Herat	9.0	9.0	49.6	39.0	49.9	33.6	3.0	35.6	10.0	30.0	53.0	5.0	33	396	20	77	106	15
West	Farah	Farah	3.0	3.0	22.2	24.8	25.3	10.1	1.5	23.5	6.0	27.5	3.0	7.0	50	783	27	111	12	69
Central	Kabul	Darul Aman	1.4	0.0	40.5	71.5	64.3	56.2	25.2	11.5	34.4	86.6	27.8	15.7	1,800	>100	85	121	43	28
Central	Kabul	Kabul	11.0	25.0	33.1	58.6	63.9	83.2	31.2	12.0	28.8	76.0	27.6	33.5	284	48	87	130	43	40
Central	Kabul	Kariz Mir	27.0	30.0	46.9	68.8	91.7	96.8	22.0	25.0	14.0	93.0	21.0	71.0	81	83	30	135	23	73
Central	Kabul	Paghman	43.0	52.0	62.1	68.5	80.9	83.1	55.0	23.0	80.0	138.0	26.0	65.0	128	44	129	201	32	78
Central	Kabul	Sarobi	15.0	29.0	44.4	54.9	46.5	55.1	16.0	5.0	11.0	71.5	24.5	8.2	107	17	25	130	53	15
Central	Parwan	Jabul Seraj	22.0	36.0	65.3	88.2	98.3	113.6	47.5	86.0	46.0	97.0	50.0	16.0	216	239	70	110	51	14
South	Paktya	Gardiz	11.0	11.0	40.4	70.8	65.9	74.2	16.0	15.0	26.0	143.0	51.0	19.5	145	136	64	202	77	26
South	Ghazni	Ghazni	11.0	11.0	37.9	36.4	42.4	47.4	16.0	6.5	32.0	38.0	20.0	0.0	145	59	84	104	47	0
East	Nangharhar	Ghazniabad	0.0	4.6	12.9	25.1	37.7	56.3	3.0	0.0	27.0	28.0	0.0	43.0	>100	0	209	112	0	76
East	Nangharhar	Jalalabad	8.0	16.0	17.3	24.8	63.2	33.0	0.0	0.0	15.5	27.5	4.0	14.5	0	0	90	111	6	44
South West	Kandahar	Kandahar	6.0	6.0	49.1	35.1	26.3	13.6	0.0	73.5	15.0	63.0	5.5	1.5	0	1,225	31	179	21	11

Sources:

MAIL/USGS Project

Annex 2: Wheat seed produced by the MAIL/FAO seed project (2003-2009)

SN	Variety	Breeder Seed (kg)								Foundation Seed (tonnes)								Certified Seed (tonnes)							
		2003	2004	2005	2006	2007	2008	2009	Total	2003	2004	2005	2006	2007	2008	2009	Total	2003	2004	2005	2006	2007	2008	2009	Total
1	MH-96	0.100	2.440	0.341	0.404	--	--	--	3.285	2.00	44.00	8.46	--	10.88	--	--	65.34	35	800	328	--	--	173	80	1,416
2	Herat-99	0.775	3.409	1.500	1.775	3.525	6.607	8.301	25.892	18.00	64.00	35.50	14.65	14.76	54.33	210.05	411.291	322	1,175	978	450	358	445	570	4,298
3	Balkh-66	0.200	--	--	0.315	--	--	--	0.515	4.50	--	--	2.40	9.07	--	--	15.974	81	3	--	60	9	12	0	165
4	Mazar 99	1.850	--	0.748	1.200	1.514	3.492	7.278	16.082	44.00	--	17.00	31.05	26.03	33.71	156.01	307.799	790	5	533	942	815	1,321	984	5,390
5	Gul 96	1.825	0.118	0.783	0.590	0.430	6.452	5.395	15.593	42.50	4.00	19.00	17.56	14.14	2.91	171.74	271.853	782	83	575	1,150	193	348	300	3,431
6	Ghori-96	0.800	--	0.850	0.540	0.554	11.743	8.205	22.692	18.50	--	18.99	39.06	6.59	9.02	122.35	214.503	330	3	580	733	1,017	1,033	1,167	4,863
7	Lalmi-1	2.000	--	0.950	0.340	1.700	--	--	4.990	4.50	--	20.00	6.40	2.68	10.43	--	44.007	81	5	605	620	128	235	200	1,874
8	Lalmi-2	0.900	0.378	0.753	0.797	1.035	4.631	5.900	14.394	47.00	11.00	18.50	48.64	21.20	23.39	111.79	281.524	847	238	569	1,279	767	881	955	5,536
9	Lalmi-3	1.500	0.370	0.450	1.114	3.500	6.160	4.718	17.812	20.00	11.00	8.40	20.25	33.67	40.62	100.15	234.090	358	235	326	504	242	460	882	3,007
10	Diyma-96	0.200	2.193	0.318	0.646	1.958	0.350	0.890	6.555	35.00	--	8.80	20.88	12.70	29.25	2.56	109.190	629	8	336	521	236	154	100	1,984
11	Sn'b	--	--	0.308	0.348	0.730	1.405	1.521	4.312	4.50	--	7.00	8.05	5.38	9.18	33.41	67.513	81	--	293	503	13	42	160	1,092
12	Cham-6	--	0.050	0.371	0.221	0.880	0.485	--	2.007	4.00	--	8.00	27.05	6.61	4.80	--	50.451	119	--	317	--	210	99	123	868
13	Rona-96	--	--	0.200	0.857	2.721	0.536	--	4.314	--	--	4.80	5.40	14.73	33.64	--	58.565	--	--	240	--	85	423	453	1,201
14	Pamir-94	0.800	--	0.900	0.747	0.733	2.645	0.691	6.516	18.50	--	18.20	7.05	19.31	11.45	31.76	106.273	318	3	617	194	145	490	640	2,407
15	Roshan-96	1.950	1.832	0.600	0.389	0.260	3.340	3.109	11.480	44.00	39.00	14.50	13.30	7.75	0.69	--	119.238	736	880	473	178	309	1,505	881	4,962
16	Amu-99	1.350	1.413	0.428	0.848	0.587	3.635	3.764	12.025	30.50	29.00	9.50	26.95	12.30	10.82	106.70	225.770	514	666	357	689	1,474	1,429	402	5,531
17	Parva-2	0.400	--	0.200	0.950	2.782	1.618	2.240	8.190	9.50	--	34.00	32.87	15.82	26.39	18.80	137.380	159	3	245	851	289	311	376	2,234
18	Solh-2	0.600	0.315	0.983	0.569	0.202	2.915	4.961	10.545	14.00	9.00	24.00	15.97	14.41	27.49	43.30	148.167	236	200	701	--	285	584	470	2,476
19	PBW-154	0.800	0.180	0.988	1.692	11.470	10.000	8.657	33.787	18.00	5.00	23.00	38.53	35.50	134.00	234.48	488.510	303	100	677	--	534	1,017	2,734	5,365
20	HUW-234	--	--	0.368	0.348	--	--	--	0.716	--	--	8.00	1.00	11.70	--	--	20.700	--	--	317	--	16	105	--	438
21	HD-2285	--	--	0.130	0.320	4.500	0.648	1.579	7.177	--	--	3.50	1.00	6.78	65.84	34.40	111.515	--	--	119	27	42	411	1,432	2,031
22	Bakhtawar-92	0.550	3.002	1.263	1.799	0.790	3.940	4.424	15.768	12.00	65.00	22.85	16.61	33.00	--	42.50	191.960	200	1,428	668	426	339	455	19	3,535
23	Mayson	--	--	--	0.242	--	--	--	0.242	--	--	--	--	--	--	--	0.000	--	--	--	--	--	--	--	0
24	Kouz/AA/Kouz	--	--	--	0.350	--	--	--	0.350	--	--	--	--	--	--	--	0.000	--	--	--	--	--	--	--	0
25	FDLu/NG8695	--	--	--	0.225	--	--	--	0.225	--	--	--	--	--	--	--	0.000	--	--	--	--	--	--	--	0
26	Pastor	--	--	0.728	0.600	0.160	--	--	1.488	--	--	--	--	6.00	--	--	6.000	--	--	--	--	--	65	--	65
27	Ghazna-97	0.250	--	--	--	0.170	--	--	0.420	--	--	--	5.33	--	3.10	--	8.430	--	--	--	145	10	11	20	186
28	/4/Clif	--	--	--	0.150	--	--	--	0.150	--	--	--	--	--	--	--	0.000	--	--	--	--	--	--	--	0
29	UREs/PRC	--	--	0.130	0.224	--	--	--	0.354	--	--	--	--	--	--	--	0.000	--	--	--	--	--	--	--	0
30	IRENA/Weaver	--	--	0.230	--	--	--	1.900	2.130	--	--	--	--	3.01	--	--	3.010	--	--	--	--	--	25	--	25
31	WEBBLL-1	--	--	0.130	0.200	--	--	--	0.330	--	--	--	--	--	--	--	0.000	--	--	--	--	--	--	--	0
32	Takhar-96	0.150	--	--	--	--	--	--	0.150	--	--	--	--	--	--	--	0.000	4	--	--	111	--	--	--	115
33	Dorkhshan-08	--	--	--	--	--	--	8.487	8.487	--	--	--	--	--	--	--	0.000	--	--	--	--	--	--	--	0
34	Shesham Bagh-	--	--	--	--	--	--	4.980	4.980	--	--	--	--	--	--	--	0.000	4	--	--	111	--	--	--	115
Total		17.000	15.700	14.650	18.800	40.201	70.602	87.000	263.953	391.00	281.00	332.00	400.00	344.00	531.05	1420.00	2279.07	6,929	5,835	9,854	9,494	7,516	12,034	12,948	64,610

Source: MAIL/FAO Seed Project (GCP/AFG/018/045/EC)

Annex 3: Area and Production of Wheat in 2010 by province (Preliminary Estimates; end-May 2010)

REGION/ Province	Irrigated Wheat			Rainfed Wheat			Total Wheat		
	Area	Yield	Production	Area	Yield	Production	Area	Yield	Production
	('000 ha)	(t/ha)	('000 tons)	('000 ha)	(t/ha)	('000 tons)	('000 ha)	(t/ha)	('000 tons)
NORTH	217	2.53	548	675	1.10	743	892	1.45	1,291
Faryab	35	2.55	89	183	1.23	225	218	1.44	314
Juzjan	46	2.38	109	102	1.33	136	148	1.66	245
Sar-i-Pul	27	2.53	68	106	1.00	106	133	1.31	174
Balkh	95	2.64	251	146	1.00	146	241	1.65	397
Samangan	14	2.20	31	138	0.94	130	152	1.06	161
NORTH-EAST	218	2.61	569	342	1.12	383	560	1.70	952
Bughlan	56	2.20	123	67	1.01	68	123	1.55	191
Kunduz	88	2.80	246	34	1.20	41	122	2.35	287
Takhar	50	2.99	150	126	1.30	164	176	1.78	314
Badakhshan	24	2.07	50	115	0.96	110	139	1.15	160
WEST	147	2.43	357	226	0.97	220	373	1.55	577
Herat	97	2.32	225	132	1.11	147	229	1.62	372
Farah	25	2.54	64	0	0.00		25	2.56	64
Badghis	25	2.70	68	94	0.78	73	119	1.18	141
WEST-CENTRAL	39	2.67	104	58	1.05	61	97	1.70	165
Ghor	26	2.70	70	45	1.04	47	71	1.65	117
Bamyan	13	2.60	34	13	1.05	14	26	1.85	48
CENTRAL	126	3.16	398	19	1.16	22	145	2.90	420
Kabul	26	3.12	81	1	0.74	1	27	3.04	82
Parwan	27	3.49	94	6	1.19	7	33	3.06	101
Panjsher	7	3.02	21	2	1.04	2	9	2.56	23
Kapisa	14	2.87	40	1	0.71	1	15	2.73	41
Logar	26	2.66	69	4	1.28	5	30	2.47	74
Wardak	26	3.58	93	5	1.20	6	31	3.19	99
SOUTH	107	3.04	325	12	0.67	8	119	2.80	333
Paktya	21	2.50	53	1	0.74	1	22	2.45	54
Paktika	14	3.50	49	6	0.74	4	20	2.65	53
Khost	14	3.10	43	1	0.54	1	15	2.93	44
Ghazni	58	3.11	180	4	0.62	2	62	2.94	182
EAST	114	2.73	311	7	0.43	3	121	2.60	314
Nangarhar	79	2.61	206	0	0.00	0	79	2.61	206
Laghman	15	3.50	53	0	0.00	0	15	3.53	53
Kunarha	14	2.79	39	6	0.52	3	20	2.10	42
Nooristan	6	2.14	13	1	0.44	0	7	1.86	13
SOUTH-WEST	183	2.57	470	14	0.71	10	197	2.44	480
Kandahar	40	2.96	118	1	0.36	0	41	2.88	118
Helmand	74	2.61	193	0	0.00		74	2.61	193
Zabul	18	2.43	44	5	1.07	5	23	2.13	49
Nimroz	15	1.90	29	1	0.35	0	16	1.81	29
Uruzgan	26	2.42	63	2	0.53	1	28	2.29	64
Daikunde	10	2.25	23	5	0.75	4	15	1.80	27
TOTAL	1,151	2.68	3,082	1,353	1.07	1,450	2,504	1.81	4,532

Annex 4: Wheat Balance in 2010 by Province (Preliminary estimates; end-May 2010)

REGION/ Province	Settled population in 2010 (^{'000 no.})	Irrigated wheat area forecast 2011 harvest (^{'000 ha.})	Rainfed wheat area forecast 2011 harvest (^{'000 ha.})	Production 2010 (^{'000 tons})	Requirement 2010			Surplus or Deficit 2010 (^{'000 tons})
					Human consumption (^{'000 tons})	Seed (^{'000 tons})	Post harvest Losses (^{'000 tons})	
NORTH	3,474.4	217	675	1,291	555.9	93.9	193.8	447.4
Faryab	915.8	35	183	314	146.5	21.3	47.1	99.1
Juzjan	494.2	46	102	245	79.1	16.5	36.8	112.6
Sar-i-Pul	514.1	27	106	174	82.3	13.5	26.1	52.1
Balkh	1,194.0	95	146	397	191.0	28.7	59.6	117.7
Samangan	356.3	14	138	161	57.0	13.9	24.2	65.9
NORTH-EAST	3,527.9	218	342	952	564.5	66.5	142.9	178.1
Bughlan	833.3	56	67	191	133.3	15.4	28.7	13.6
Kunduz	917.9	88	34	287	146.9	18.2	43.1	78.8
Takhar	901.9	50	126	314	144.3	19.2	47.1	103.4
Badakhshan	874.8	24	115	160	140.0	13.7	24.0	-17.7
WEST	2,632.8	147	226	577	421.2	44.5	86.6	24.7
Herat	1,710.1	97	132	372	273.6	27.9	55.8	14.7
Farah	466.3	25	0	64	74.6	4.4	9.6	-24.6
Badghis	456.4	25	94	141	73.0	12.2	21.2	34.6
WEST-CENTRAL	1,047.4	39	58	165	167.6	11.7	24.8	-39.1
Ghor	635.7	26	45	117	101.7	8.3	17.6	-10.6
Bamyan	411.7	13	13	48	65.9	3.4	7.2	-28.5
CENTRAL	5,759.4	126	19	420	921.4	23.6	63.2	-588.2
Kabul	3,691.4	26	1	82	590.6	4.6	12.3	-525.5
Parwan	610.3	27	6	101	97.6	5.2	15.2	-17.0
Panjsher	141.4	7	2	23	22.6	1.4	3.5	-4.5
Kapisa	406.2	14	1	41	65.0	2.5	6.2	-32.7
Logar	360.9	26	4	74	57.7	4.9	11.1	0.3
Wardak	549.2	26	5	99	87.9	5.0	14.9	-8.8
SOUTH	2,567.3	107	12	333	410.7	19.7	50.0	-147.4
Paktya	507.8	21	1	54	81.2	3.8	8.1	-39.1
Paktika	400.5	14	6	53	64.1	2.9	8.0	-22.0
Khost	528.9	14	1	44	84.6	2.5	6.6	-49.7
Ghazni	1,130.1	58	4	182	180.8	10.5	27.3	-36.6
EAST	2,345.2	114	7	314	375.2	18.5	47.2	-126.9
Nangarhar	1,383.9	68	0	206	221.4	11.9	30.9	-58.2
Laghman	410.3	15	0	53	65.6	2.6	8.0	-23.2
Kunarha	414.7	14	6	42	66.4	2.9	6.3	-33.6
Nooristan	136.3	6	1	13	21.8	1.1	2.0	-11.9
SOUTH-WEST	3,131.2	183	14	480	501.0	33.3	72.2	-126.5
Kandahar	1,103.4	40	1	118	176.5	7.1	17.7	-83.3
Helmand	850.2	74	0	193	136.0	13.0	29.0	15.0
Zabul	279.8	18	5	49	44.8	3.6	7.4	-6.8
Nimroz	151.1	15	1	29	24.2	2.7	4.4	-2.3
Uruzgan	322.6	26	2	64	51.6	4.7	9.6	-1.9
Daikunde	424.1	10	5	27	67.9	2.2	4.1	-47.2
Sub-total for settled	24,485.6	1151	1,353	4532	3,917.5	311.7	680.7	-377.9
Sub-total Nomads	1,735.0	0	0	0	277.6	--	--	-277.6
Sub-total returnees	278.5	0	0	0	44.6	--	--	-44.6
Total all consumers	26,499.1	1151	1,353.0	4,532.0	4,239.7	311.7	680.7	-700.1

Sources:

Settled population in 2010: Central Statistics Organization

Nomads in 2010: Calculated from the May 09 APR figure, using CSO's annual population growth-rate of 2.03%

Returnees: UNHCR/CSO

All other data: MAIL

Annex 5: Production and Requirements of cereals in 2010
(Preliminary Estimates; end-May 2010)

Crop	Consumption units (‘000 no.)	Area (‘000 ha)	Seed-rate (kg/ha)	Required for human consumption (kg/person)	Required for				Total required (‘000 t)	Total production (‘000 t)	Surplus/Deficit (‘000 t)
					Food (‘000 t)	Seed (‘000 t)	Feed (‘000 t)	Loss (‘000 t)			
	(1)	(2)	(3)	(4)	(5)=(1)x(4)	(6)=(2)x(3)	(7)	(8)	(9)=(5)+(6)+(7)+(8)	(10)	(11)=(10)-(9)
Irrigated wheat	26,499.1 (See Annex 3)	1,151	175			201	--	462		3,082	
Rainfed wheat		1,353	83			111	--	218		1,450	
All wheat		2,504	126	160	4,240	312	0	680	5,232	4,532	-700
Milled rice		200	105	17	450	21	0	32	503	450	-53
Maize		140	60	2	53	8	195	45	301	301	0
Barley		270	110	1	26	30	315	66	437	437	0
All cereals	3,114		180	4,769	371	510	823	6,473	5,720	-753	

Extraction-rate from paddy to rice: 67%

Losses: 15% of production for wheat, maize and barley; 7% for milled rice

Annex 6a: Adverse conditions of crop
(See Annex 6c for district names)

Region	Province	Crop	Adverse Condition	Completely lost area (ha.)	Partially lost area (ha.)	% Yield loss in partially lost area	D1	D2	D3	D4	D5	D6	D7	D8	D9	D10	D11	D12	D13	D14	D15	D16	D17	D18	D19
North	FARYAB	Irrigated Wheat (winter)	Rust		1000	2	4	5	7	6	8														
North	FARYAB	Rainfed Wheat (winter)	Rust		1500	2	4	5	7	6	8														
North	FARYAB	Grapes	Other		250	5	9	3	5																
North	FARYAB	Grapes	Frost		61	1	9	5																	
North	SAR-I- PUL	Almond	Frost		50	5	6	2	7	4	5														
North	SAR-I- PUL	Apricot	Frost		40	1	4																		
North	SAMANGAN	Grapes	Hailstorm		400	20	3																		
North	SAMANGAN	Almond	Frost		400	20	1	2	3	4	5	6	7												
North	SAMANGAN	Apricot	Frost		20	20	1	2	7																
North_East	BAGHLAN	Almond	Frost		100	20	1	2	3																
North_East	TAKHAR	Almond	Frost		20	20	1	9	10	11	12														
North_East	TAKHAR	Apricot	Frost		25	30	1	9	10	11	12														
North_East	BADAKHSHAN	Irrigated Wheat (winter)	Frost		400	50	1	4	5																
West	HERAT	Irrigated Wheat (winter)	Flood		50	75	2	3	4	4															
West	HERAT	Grapes	Frost			20	2	3	14																
West	HERAT	Apple	Frost			15	2	3	4																
West	HERAT	Almond	Frost			25	2	3	4	14															
West	HERAT	Apricot	Frost			30	2	3	4	5	14	15													
West	HERAT	Peaches	Frost			30	2	3	4	14															
West	FARAH	Irrigated Wheat (winter)	Locust		10	15	3	9																	
West	FARAH	Irrigated Wheat (winter)	Hailstorm	10	20	25	1	3	9																
West	FARAH	Rainfed Wheat (spring)	Hailstorm	20	35	20	1	4	7	9															
West	FARAH	Rainfed Wheat (spring)	Locust		8	13	3	9																	
West	BADGHIS	Irrigated Wheat (winter)	Flood		300	20	1	3	4																
West	BADGHIS	Irrigated Wheat (winter)	Locust		20	3	2	3	4																
West	BADGHIS	Grapes	Frost		15	10	1	4																	
West	BADGHIS	Plums	Frost		7	6	1	2	4																
West	BADGHIS	Almond	Frost		13	4	1	2	3	4															
West	BADGHIS	Walnut	Frost		22	8	1	3	4	6															
West	BADGHIS	Apricot	Frost		11	7	1	2	3	4															
West Central	GHOR	Irrigated Wheat (winter)	Flood	968	240	15	1	2	3	7															
West Central	GHOR	Irrigated Wheat (spring)	Sunn pest	40	600	7	1	2	3	7															
West Central	GHOR	Barley Rainfed	Sunn pest	10	25	4	1	3																	
West Central	GHOR	Walnut	Other		3	5	1	3	4																
West Central	GHOR	Apricot	Other		5	2	1	2	4																
Central	LOGAR	Rainfed Wheat (spring)	Locust	100	1000	30	4																		

Annex 6a: Adverse conditions of crop
(See Annex 6c for district names)

Region	Province	Crop	Adverse Condition	Completely lost area (ha.)	Partially lost area (ha.)	% Yield loss in partially lost area	D1	D2	D3	D4	D5	D6	D7	D8	D9	D10	D11	D12	D13	D14	D15	D16	D17	D18	D19
Central	WARDAK	Apple	Other		50		4																		
Central	WARDAK	Apple	Other		90	1	2	3	4	5	6	7													
South	PAKTIKA	Irrigated Wheat (winter)	Drought	70	3500	10	1	2	3	4	5	6	7	8	9	10	11	12	13	14	15	16	17	18	19
South	PAKTIKA	Melon	Melon Fly	60	150	35	1	2	3	4	5	6	7	8	9	10	11	12	13	14	15	16	17	18	19
South	KHOST	Irrigated Wheat (winter)	Other			5	1	3	8	5															
South	KHOST	Irrigated Wheat (winter)	Hailstorm		100	35	8																		
East	NOORISTAN	Irrigated Wheat (winter)	Other		50	5	4	1	5																
East	NOORISTAN	Almond	Other		5	8	4	1	5																
East	NOORISTAN	Apricot	Other		2	10	4	1	5																
East	NOORISTAN	Peaches	Other		2	5	4	1	5																
South-West	HELMAND	Irrigated Wheat (winter)	Sunn pest		220	5	1	2	3	4															
South-West	HELMAND	Irrigated Wheat (winter)	Locust		5000	5	1	2																	
South-West	ZABUL	Irrigated Wheat (winter)	Smut		50	1	3	4	7	8															
South-West	ZABUL	Irrigated Wheat (winter)	Rust		50	1	2	3	4	5	6	7	8	9											
South-West	ZABUL	Irrigated Wheat (spring)	Rust		20	1	2	3	4	5	6	7	8	9											
South-West	ZABUL	Rainfed Wheat (winter)	Locust		300	1	2	3	4	5	6	7	8	9											
South-West	ZABUL	Rainfed Wheat (winter)	Smut		50	1	2	3	4	5	6	7													
South-West	ZABUL	Rainfed Wheat (winter)	Rust		60	1	2	3	4	5	6	7	8	9											
South-West	ZABUL	Rainfed Wheat (spring)	Rust		20	2	3	6	8	8	9														
South-West	ZABUL	Barley Irrigated	Rust		30	1	2	3	4	5	6	7	8	9											
South-West	ZABUL	Barley Irrigated	Smut		30	1	2	3	4	5	6	7	8	9											
South-West	UROZGAN	Irrigated Wheat (winter)	Drought		260	5	2	3	4	5															
South-West	UROZGAN	Irrigated Wheat (winter)	Rust		210	1	2	3	4	5															
South-West	UROZGAN	Barley Irrigated	Rust		130	4	2	3	4	5															
South-West	UROZGAN	Barley Irrigated	Drought		90	5	2	3	4	5															
South-West	UROZGAN	Melon	Melon Fly	50	50	1	2	3	4	5															

Annex 6b: Adverse condition of livestock
(See Annex 6c for district names)

Region	Province	Animal type	Adverse Condition	Dead	Partially Affected	D1	D2	D3	D4	D5	D6	D7	D8	D9	D10	D11	D12	D13	D14	D15	D16	D17	D18	D19
North	FARYAB	Cattle	FMD	20	30000	1	2	3	4	5	6	7	8	9	10	11	12	13	14					
North	FARYAB	Sheep	PPR	50	70000	1	2	3	4	5	6	7	8	9	10	11	12	13	14					
North	FARYAB	Goat	PPR	20	30000	1	2	3	4	5	6	7	8	9	10	11	12	13	14					
North	FARYAB	Sheep	FMD	75	150000	1	2	3	4	5	6	7	8	9	10	11	12	13	14					
North	FARYAB	Goat	Lack of water		75000	1	2	3	4	5	6	7	8	9	10	11	12	13	14					
North	FARYAB	Sheep	Lack of water		150300	1	2	3	4	5	6	7	8	9	10	11	12	13	14					
North	FARYAB	Goat	FMD	30	80000	1	2	3	4	5	6	7	8	9	10	11	12	13	14					
North	JAWZJAN	Cattle	FMD	70	500	1																		
North	SAR-I- PUL	Poultry	Newcastle	200	8000	1	2	3	4	5	6	7												
North	SAR-I- PUL	Cattle	FMD	70	5000	1	2	3	4	5	6	7												
North	SAR-I- PUL	Sheep	FMD	70	16000	1	2	3	4	5	6	7												
North	SAR-I- PUL	Goat	FMD	40	4000	1	2	3	4	5	6	7												
North	SAR-I- PUL	Goat	Lack of water		1000	1	2	3	4	5	6	7												
North	SAR-I- PUL	Sheep	Lack of water		40000	1	2	3	4	5	6	7												
North	SAMANGAN	Goat	Other		5000	1	2	3	4	5	6	7												
North	SAMANGAN	Sheep	Other		5000	1																		
North	SAMANGAN	Cattle	FMD		7000	1																		
North	SAMANGAN	Goat	FMD		1000	1	3	4																
North_East	BAGHLAN	Cattle	FMD		10000	1	3	4																
North_East	BAGHLAN	Sheep	FMD		1000	1	3	4																
North_East	KUNDUZ	Goat	PPR	45	2000	1	2	3	4	5	6	7												
North_East	KUNDUZ	Cattle	Black leg	20	50	2	3																	
North_East	KUNDUZ	Sheep	Sheep pox	200	4000	1	2	3	4	5	6	7												
North_East	KUNDUZ	Poultry	Newcastle	1000	7000	1	2	3	4	5	6	7												
North_East	KUNDUZ	Cattle	FMD	50	500	2	3																	
North_East	KUNDUZ	Sheep	PPR	100	500	1	2	3	4	5	6	7												
North_East	TAKHAR	Poultry	Newcastle	1000	10000	1	5	8	6	12	14													
North_East	TAKHAR	Goat	PPR	150	4000	1	2	3	7	13	15													
North_East	TAKHAR	Sheep	PPR	400	11000	1	2	3	7	13	15	17												
North_East	TAKHAR	Cattle	FMD	15	500	1	2	5	8	11	15													
North_East	BADAKHSHAN	Cattle	FMD	20	1000	13	15	3	4	1	8	11	12											
North_East	BADAKHSHAN	Poultry	Newcastle	1300	2500	1	2	3	4	5	12	15	20											
North_East	BADAKHSHAN	Sheep	Sheep pox	400	10000	26	7	17	18	19	20													
North_East	BADAKHSHAN	Cattle	Black leg	50	4000	2	3	4	1															

Annex 6b: Adverse condition of livestock
(See Annex 6c for district names)

Region	Province	Animal type	Adverse Condition	Dead	Partially Affected	D1	D2	D3	D4	D5	D6	D7	D8	D9	D10	D11	D12	D13	D14	D15	D16	D17	D18	D19
West	HERAT	Poultry	Newcastle	1000	160000	2	3	4	5	14														
West	HERAT	Goat	PPR	2000	1500	11	12	14	15	16														
West	HERAT	Goat	Lack of vaccines		15000	2	3	7	16															
West	HERAT	Sheep	Lack of vaccines		50000	2	3	7	16															
West	HERAT	Cattle	FMD	30	400	2	3	4																
West	HERAT	Cattle	Lack of vaccines	30	1000	2	3	4																
West	HERAT	Sheep	PPR	300	15000	11	12	14	15	16														
West	HERAT	Goat	FMD	50	1000	2	3	7	16															
West	HERAT	Sheep	FMD	50	1000	2	3	7	16															
West	HERAT	Sheep	Sheep pox	800	30000	4	6	7	8	9	11	12	16											
West	FARAH	Sheep	Sheep pox		102000	2	3	4			6	7	8											
West	FARAH	Poultry	Newcastle	2800	110000	1	2	3	4	5	6	7	8	9	10	11								
West	FARAH	Cattle	FMD		17500	2	3	6	8															
West	BADGHIS	Cattle	FMD		85	2	4	5	7															
West	BADGHIS	Goat	PPR	20	103	1	2	3	4	5	6	7												
West Central	GHOR	Cattle	Enterotoxaemia	30	10000	1	2	3	4	5														
West Central	GHOR	Goat	Sheep pox	250	12000	1	2	3	5															
West Central	GHOR	Cattle	Lack of feed	40	200	1	2	3	4	5	6	7	8	9	10									
West Central	GHOR	Cattle	Lack of vaccines		30000	1	2	3	4	5	6	7	8	9	10									
West Central	GHOR	Sheep	Lack of vaccines		150000	1	4	6	7	8														
West Central	GHOR	Sheep	Sheep pox	250	50000	1	3	4	5	7														
West Central	BAMYAN	Goat	Sheep pox	15	88	1	4	5																
West Central	BAMYAN	Poultry	Newcastle	88	200	1																		
West Central	BAMYAN	Cattle	FMD		95	1	2																	
Central	KABUL	Sheep	FMD	7	26	15	5	11	12															
Central	KABUL	Cattle	FMD	5	25	15	5	11	12															
Central	KABUL	Goat	FMD	6	14	15	5	11	12															
Central	KABUL	Sheep	PPR	11	25	15	5																	
Central	KABUL	Cattle	Anthrax	3	127	12																		
Central	KABUL	Goat	Enterotoxaemia	7	23	13																		
Central	KABUL	Sheep	Enterotoxaemia	8	27	15																		
Central	KABUL	Goat	PPR	9	26	15	5																	
Central	KABUL	Goat	Anthrax	1	0.04	12																		
Central	PARWAN	Cattle	FMD		300	2	7																	
Central	PARWAN	Goat	FMD		450	5	6																	

Annex 6b: Adverse condition of livestock
(See Annex 6c for district names)

Region	Province	Animal type	Adverse Condition	Dead	Partially Affected	D1	D2	D3	D4	D5	D6	D7	D8	D9	D10	D11	D12	D13	D14	D15	D16	D17	D18	D19
Central	PARWAN	Sheep	FMD		450	5	6																	
Central	PANJSHER	Poultry	PPR	20	300	4																		
Central	PANJSHER	Sheep	PPR	20	180	4																		
Central	PANJSHER	Cattle	FMD	15	880	2	4																	
Central	KAPISA	Sheep	Harsh climatic condition	130		4																		
Central	LOGAR	Cattle	Lack of feed		500	1	2	5	4															
Central	LOGAR	Cattle	FMD	90	4000	1	2	5	4	3														
Central	LOGAR	Cattle	Black leg	130		2	1																	
Central	WARDAK	Sheep	FMD	40	500	8																		
South	PAKTYA	Cattle	Black leg	5	50	11																		
South	PAKTYA	Sheep	Sheep pox		1000	4	5	6	7															
South	PAKTYA	Cattle	FMD	30	1000	11	3	2	9	10														
South	PAKTIKA	Poultry	PPR	1200	3000	1	2	3	4	5	6	7	8	9	10	11	12	13	14	15	16	17	18	19
South	PAKTIKA	Sheep	Enterotoxaemia	70	2460	1	2	3	4	5	6	7	8	9	10	11	12	13	14	15	16	17	18	19
South	PAKTIKA	Poultry	Lack of feed	500	36000	1	2	3	4	5	6	7	8	9	10	11	12	13	14	15	16	17	18	19
South	PAKTIKA	Cattle	Enterotoxaemia	150	1520	1	2	3	4	5	6	7	8	9	10	11	12	13	14	15	16	17	18	19
South	PAKTIKA	Sheep	Lack of feed	300	25000	1	2	3	4	5	6	7	8	9	10	11	12	13	14	15	16	17	18	19
South	PAKTIKA	Cattle	FMD	30	890	1	2	3	4	5	6	7	8	9	10	11	12	13	14	15	16	17	18	19
South	PAKTIKA	Goat	Lack of feed	630	18000	1	2	3	4	5	6	7	8	9	10	11	12	13	14	15	16	17	18	19
South	PAKTIKA	Sheep	Enterotoxaemia	240	1230	1	2	3	4	5	6	7	8	9	10	11	12	13	14	15	16	17	18	19
South	PAKTIKA	Cattle	Newcastle	150	1400	1	2	3	4	5	6	7	8	9	10	11	12	13	14	15	16	17	18	19
South	PAKTIKA	Goat	PPR	190	960	1	2	3	4	5	6	7	8	9	10	11	12	13	14	15	16	17	18	19
South	KHOST	Cattle	FMD	10	1000	13	4	1																
South	GHAZNI	Sheep	Lack of vaccines		400	1	2	3	4	5	6	7	8	9	10	11	12	13	14	15	16	17	18	19
South	GHAZNI	Sheep	Harsh climatic condition		500	1	2	3	4	5	6	7	8	9	10	11	12	13	14	15	16	17	18	19
South	GHAZNI	Cattle	Enterotoxaemia		2000	1	2	3	4	5	6	7	8	9	10	11	12	13	14	15	16	17	18	19
South	GHAZNI	Goat	Lack of vaccines		2000	1	2	3	4	5	6	7	8	9	10	11	12	13	14	15	16	17	18	19
South	GHAZNI	Poultry	Lack of vaccines		2000	1	2	3	4	5	6	7	8	9	10	11	12	13	14	15	16	17	18	19
South	GHAZNI	Goat	Harsh climatic condition		2000	1	2	3	4	5	6	7	8	9	10	11	12	13	14	15	16	17	18	19
South	GHAZNI	Sheep	Lack of fodder		2000	1	2	3	4	5	6	7	8	9	10	11	12	13	14	15	16	17	18	19
South	GHAZNI	Goat	Lack of fodder		2000	1	2	3	4	5	6	7	8	9	10	11	12	13	14	15	16	17	18	19
East	NOORISTAN	Sheep	Sheep pox		500	4	3	2	1	5	6	7												
East	NOORISTAN	Cattle	FMD	20	200	4	3	2	1	5	6	7												
South-West	KANDAHAR	Poultry	Lack of feed		850	1	3	4																
South-West	KANDAHAR	Goat	Enterotoxaemia	140	2200	1	4																	

Annex 6b: Adverse condition of livestock
(See Annex 6c for district names)

Region	Province	Animal type	Adverse Condition	Dead	Partially Affected	D1	D2	D3	D4	D5	D6	D7	D8	D9	D10	D11	D12	D13	D14	D15	D16	D17	D18	D19
South-West	KANDAHAR	Cattle	FMD	15	420	1	2	9																
South-West	KANDAHAR	Sheep	Enterotoxaemia	150	2500	1	2	4																
South-West	HELMAND	Poultry	Newcastle		10000	1	2	3	4															
South-West	HELMAND	Cattle	FMD		45000	1	2	3	4															
South-West	HELMAND	Cattle	Enterotoxaemia		20000	1	2	3	4															
South-West	ZABUL	Sheep	Lack of market		2000	1	2	3	4	5	6	7	8	9	10	11								
South-West	ZABUL	Cattle	FMD	13	18	1	2	3	4	5	6	7	8	9	10	11								
South-West	ZABUL	Goat	FMD	40	500	1	2	3	4	5	6	7	8	9	10	11								
South-West	ZABUL	Poultry	Lack of vaccines	17	30	1	2	3	4	5	6	7	8	9	10	11								
South-West	ZABUL	Cattle	Black leg	5	10	1	2	3	4	5	6	7	8	9	10	11								
South-West	ZABUL	Sheep	Lack of feed			1	2	3	4	5	6	7	8	9	10	11								
South-West	ZABUL	Cattle	Lack of feed			1	2	3	4	5	6	7	8	9	10	11								
South-West	ZABUL	Goat	Sheep pox		300	1	2	3	4	5	6	7	8	9	10	11								
South-West	ZABUL	Cattle	Lack of fodder			1	2	3	4	5	6	7	8	9	10	11								
South-West	NIMROZ	Sheep	PPR	35	500	1	4	5																
South-West	NIMROZ	Goat	PPR	30	500	1	4	5																
South-West	NIMROZ	Goat	Lack of vaccines		500	1	2	3	4	5														
South-West	NIMROZ	Sheep	Lack of vaccines		500	1	2	3	4	5														
South-West	NIMROZ	Cattle	FMD	57	250	1	2	3	4															
South-West	NIMROZ	Sheep	FMD	25	350	1	2	4																
South-West	NIMROZ	Goat	FMD	30	150	1	2	4																
South-West	NIMROZ	Cattle	Lack of feed		170	1	2	4																
South-West	NIMROZ	Cattle	Lack of vaccines		150	1	2	3	4	5														
South-West	NIMROZ	Poultry	Lack of vaccines		170	1	2	3	4	5														
South-West	NIMROZ	Goat	Lack of feed		500	1	2	4																
South-West	NIMROZ	Sheep	Lack of feed		200	1	2	4																
South-West	UROZGAN	Cattle	Enterotoxaemia	40	800	1	2	3	4	5														
South-West	UROZGAN	Cattle	FMD	25	1200	1	2	3	4	5														
South-West	UROZGAN	Sheep	Sheep pox	20	4000	1	2	3	4	5														
South-West	DAYKUNDI	Sheep	Sheep pox	1425	18000	6	4	9	8	5														
South-West	DAYKUNDI	Cattle	Enterotoxaemia		590	2	3																	
South-West	DAYKUNDI	Goat	Sheep pox	720	4000	1	8																	
South-West	DAYKUNDI	Cattle	FMD		2800	4	6																	
South-West	DAYKUNDI	Sheep	Other	400	4245	5	4																	

Annex 6c: List of districts in Afghanistan (Source: CSO)

SN	Province	Province	District Code	District	District	Households
1	کابل	KABUL	1	مرکز کابل- کابل	Provincial Center Of Kabul (Kabul)	313,136
2	کابل	KABUL	2	ده سبز	Dehsabz	7,297
3	کابل	KABUL	3	میر بچه کوت	Mir Bacha Kot	5,106
4	کابل	KABUL	4	کلکان	Kalakan	2,784
5	کابل	KABUL	5	قره باغ	Qara Bagh	7,891
6	کابل	KABUL	6	فرزه	Farza	2,600
7	کابل	KABUL	7	استالف	Estalef	2,674
8	کابل	KABUL	8	گلدره	Guldara	2,281
9	کابل	KABUL	9	شکر دره	Shakar Dara	8,641
10	کابل	KABUL	10	پغمان	Paghman	14,027
11	کابل	KABUL	11	چهار آسیاب	Chahar Asyab	3,662
12	کابل	KABUL	12	موسنی	Musahi	2,574
13	کابل	KABUL	13	خاک جبار	Khak-I-Jabar	1,251
14	کابل	KABUL	14	بگرامی	Bagrami	11,099
15	کابل	KABUL	15	سروبی	Surubi	7,250
16	کاپیسا	KAPISA	1	مرکز کاپیسا - محمود راقي	Provincial Center of Kapisa (Mahmood Raqi)	6,855
17	کاپیسا	KAPISA	2	حصه دوم کوهستان	Hissa-I-Duwumi Kohistan	6,770
18	کاپیسا	KAPISA	3	حصه اول کوهستان	Hissa-I-Awal Kohistan	7,197
19	کاپیسا	KAPISA	4	نجراب	Nijrab	12,294
20	کاپیسا	KAPISA	5	کوه بند	Koh Band	3,042
21	کاپیسا	KAPISA	6	تگاب	Tagab	10,477
22	کاپیسا	KAPISA	7	اله ساي	Alasai	5,159
23	پروان	PARWAN	1	مرکز پروان- چاریکار	Provincial Center of Parwan (Charikar)	20,084
24	پروان	PARWAN	2	سید خیل	Sayyid Khel	5,385
25	پروان	PARWAN	3	جبل السراج	Jabulussaraj	7,638
26	پروان	PARWAN	4	سالنگ	Salang	3,132
27	پروان	PARWAN	5	شینواری	Shinwari	5,306
28	پروان	PARWAN	6	سیاه گرد (غوربند)	Syahgird (Ghorband)	10,594
29	پروان	PARWAN	7	بگرام	Bagram	11,570
30	پروان	PARWAN	8	کوه صافی	Koh-I-Safi	2,276
31	پروان	PARWAN	9	شبیخ علی	Shaykh Ali	3,055
32	پروان	PARWAN	10	سرخ پارسا	Surkhi Parsa	4,283
33	وردک	WARDAK	1	مرکز وردک - میدان شهر	Provincial Center Of Wardak (Maidan Shahr)	5,332
34	وردک	WARDAK	2	جالریز	Jalrez	7,063
35	وردک	WARDAK	3	حصه اول بهسود	Hissa-I- Awal Behsud	4,315
36	وردک	WARDAK	4	مرکز بهسود	Markaz-I-Behsud	16,228
37	وردک	WARDAK	5	دایمیرداد	Daimirdad	3,610
38	وردک	WARDAK	6	جغتو	Jaghatu	7,536
39	وردک	WARDAK	7	چک وردک	Chak-I-Wardak	13,083
40	وردک	WARDAK	8	سیدآباد	Sayyidabad	18,581
41	وردک	WARDAK	9	نرخ	Nerkh	8,483
42	لوگر	LOGAR	1	مرکز لوگر- پل علم	Provincial Center of Logar (Puli Alam)	12,719
43	لوگر	LOGAR	2	برکی برک	Baraki Barak	11,289
44	لوگر	LOGAR	3	چرخ	Charkh	5,378
45	لوگر	LOGAR	4	خوشی	Khushi	2,255
46	لوگر	LOGAR	5	محمدآغه	Mohammad Agha	8,317
47	لوگر	LOGAR	6	خروار	Khar War	3,155
48	لوگر	LOGAR	7	ازره	Azra	2,026

Annex 6c: List of districts in Afghanistan (Source: CSO)

SN	Province	Province	District Code	District	District	Households
49	غزنی	GHAZNI	1	مرکز غزنی - غزنی	Provincial Center of Ghazni (Ghazni)	24,859
50	غزنی	GHAZNI	2	ده یک	Deh Yak	6,275
51	غزنی	GHAZNI	3	زنخان	Zanakhani	2,870
52	غزنی	GHAZNI	4	خواجه عمری	Khawaja Omari	2,423
53	غزنی	GHAZNI	5	رشیدان	Rashidan	2,213
54	غزنی	GHAZNI	6	ولی محمد شهید خوگیانی	Wali Mohammad Shahid Khugyani	2,530
55	غزنی	GHAZNI	7	جغتو	Jaghato	4,611
56	غزنی	GHAZNI	8	واغظ	Waghaz	5,856
57	غزنی	GHAZNI	9	قره باغ	Qara Bagh	21,573
58	غزنی	GHAZNI	10	گیرو	Giro	5,922
59	غزنی	GHAZNI	11	اندر	Andar	19,191
60	غزنی	GHAZNI	12	ناور	Nawur	13,994
61	غزنی	GHAZNI	13	اجرستان	Ajristan	3,068
62	غزنی	GHAZNI	14	مالستان	Malistan	11,519
63	غزنی	GHAZNI	15	جاغوری	Jaghuri	25,071
64	غزنی	GHAZNI	16	مقر	Muqur	7,070
65	غزنی	GHAZNI	17	اب بند	Ab Band	4,062
66	غزنی	GHAZNI	18	گیلان	Gelan	6,799
67	غزنی	GHAZNI	19	نلوه	Nawa	834
68	پکتیکا	PAKTIKA	1	مرکز پکتیکا - شرن	Provincial Center of Paktika (Sharan)	7,480
69	پکتیکا	PAKTIKA	2	متاخان	Mata Khan	3,205
70	پکتیکا	PAKTIKA	3	یوسف خیل	Yosuf Khel	5,859
71	پکتیکا	PAKTIKA	4	یحیی خیل	Yahya Khel	4,575
72	پکتیکا	PAKTIKA	5	اومنه	Omna	3,754
73	پکتیکا	PAKTIKA	6	سرروضه	Sar Rawza	5,629
74	پکتیکا	PAKTIKA	7	زرغون شهر	Zarghun Shahr	5,968
75	پکتیکا	PAKTIKA	8	جانی خیل	Jani Khel	5,458
76	پکتیکا	PAKTIKA	9	گومل	Gomal	8,547
77	پکتیکا	PAKTIKA	10	سروبی	Surubi	7,418
78	پکتیکا	PAKTIKA	11	ارگون	Urگون	12,569
79	پکتیکا	PAKTIKA	12	زیروک	Ziruk	4,631
80	پکتیکا	PAKTIKA	13	نیکه	Nika	2,247
81	پکتیکا	PAKTIKA	14	دیله و خوشامند	Dila Wa Khushamand	7,448
82	پکتیکا	PAKTIKA	15	وازه خواه	Wazakhwah	7,846
83	پکتیکا	PAKTIKA	16	تروو	Turwo	2,366
84	پکتیکا	PAKTIKA	17	ورممی	Wor Mamay	4,218
85	پکتیکا	PAKTIKA	18	برمل	Barmal	11,305
86	پکتیکا	PAKTIKA	19	گیان	Giyan	5,705
87	پکتیا	PAKTYA	1	مرکز پکتیا - گردیز	Provincial Center of Paktiya (Gardez)	9,622
88	پکتیا	PAKTYA	2	سید کرم	Sayyid Karam	6,716
89	پکتیا	PAKTYA	3	زرمات	Zurmat	13,330
90	پکتیا	PAKTYA	4	شواک	Shwak	363
91	پکتیا	PAKTYA	5	وزه خدران	Wuza Jadran	5,802
92	پکتیا	PAKTYA	6	لجه احمد خیل	Laja Ahmad Khel	6,651
93	پکتیا	PAKTYA	7	جانی خیل	Jani Khel	5,336
94	پکتیا	PAKTYA	8	دند پتان	Dand Patan	4,001
95	پکتیا	PAKTYA	9	حمکنی	Samkani	8,938
96	پکتیا	PAKTYA	10	جاجی	Jaji	8,368
97	پکتیا	PAKTYA	11	احمداباء	Ahmadaba	5,182

Annex 6c: List of districts in Afghanistan (Source: CSO)

SN	Province	Province	District Code	District	District	Households
98	خوست	KHOST	1	مرکز خوست - خوست	Provincial Center of Khost (Khost)	19,518
99	خوست	KHOST	2	علیشیر	Ali Sher	7,922
100	خوست	KHOST	3	باک	Baak	3,854
101	خوست	KHOST	4	جاجی میدان	Jaji Maidan	3,582
102	خوست	KHOST	5	صبری (یعقوبی)	Sabari (Yaqubi)	12,659
103	خوست	KHOST	6	موسی خیل	Musa Khel	5,297
104	خوست	KHOST	7	قالندر	Qalandar	1,620
105	خوست	KHOST	8	نادرشاه کوت	Nadirshah Kot	5,248
106	خوست	KHOST	9	مندوزی (اسمعیل خیل)	Manduzay (Esmayel Khel)	9,725
107	خوست	KHOST	10	شمل	Shamul	2,180
108	خوست	KHOST	11	سپیره	Spera	4,688
109	خوست	KHOST	12	تنی	Tanay	9,892
110	خوست	KHOST	13	گربز	Gurbuz	3,274
111	ننګرهار	NANGARHAR	1	مرکز ننګرهار - جلال آباد	Provincial Center Of Nangarhar (Jalalabad)	31,289
112	ننګرهار	NANGARHAR	2	بهسود	Behsud	18,417
113	ننګرهار	NANGARHAR	3	سرخروود	Surkh Rud	13,234
114	ننګرهار	NANGARHAR	4	چپرهار	Chaparhar	9,758
115	ننګرهار	NANGARHAR	5	رودات	Rodat	9,681
116	ننګرهار	NANGARHAR	6	کامه	Kama	8,518
117	ننګرهار	NANGARHAR	7	کوزکنز	Kuzkunar	6,837
118	ننګرهار	NANGARHAR	8	دره نور	Darah-I-Noor	4,399
119	ننګرهار	NANGARHAR	9	شیرزاد	Sher Zad	10,069
120	ننګرهار	NANGARHAR	10	حصارک	Hesarak	4,535
121	ننګرهار	NANGARHAR	11	خوگیانی	Khugyani	17,886
122	ننګرهار	NANGARHAR	12	چپرواگام	Pachir Wagam	6,821
123	ننګرهار	NANGARHAR	13	ده بالا	Deh Bala	5,640
124	ننګرهار	NANGARHAR	14	کوت	Kot	8,347
125	ننګرهار	NANGARHAR	15	اچین	Achin	16,913
126	ننګرهار	NANGARHAR	16	نازیان	Nazyan	2,818
127	ننګرهار	NANGARHAR	17	دربابا	Dur Baba	2,398
128	ننګرهار	NANGARHAR	18	شینوار	Shinwar	10,994
129	ننګرهار	NANGARHAR	19	بتي کوت	Bati Kot	11,134
130	ننګرهار	NANGARHAR	20	مهمندره	Muhmand Dara	6,192
131	ننګرهار	NANGARHAR	21	گوشته	Goshta	5,363
132	ننګرهار	NANGARHAR	22	لعل پور	Lalpoor	2,982
133	کنړها	KUNARHA	1	مرکز کنړها - اسعدآباد	Provincial Center of Kunarha (Asad Abad)	4,295
134	کنړها	KUNARHA	2	وټه پور	Watapoor	4,764
135	کنړها	KUNARHA	3	دره پېچ	Dara-I-Pech	7,358
136	کنړها	KUNARHA	4	نرنگ وبادیل	Narang Wa Badil	4,861
137	کنړها	KUNARHA	5	سرکانی	Sar Kani	4,051
138	کنړها	KUNARHA	6	مروره	Mara Wara	2,963
139	کنړها	KUNARHA	7	دانگام	Dangam	2,931
140	کنړها	KUNARHA	8	برکنز	Bar Kunar	3,253
141	کنړها	KUNARHA	9	شیگل وشلتن	Shigal Wa Sheltan	5,671
142	کنړها	KUNARHA	10	چپه دره	Chapa Dara	4,819
143	کنړها	KUNARHA	11	نورگل	Noorgal	4,308
144	کنړها	KUNARHA	12	حوکي	Sawkai	4,781
145	کنړها	KUNARHA	13	خاص کنز	Khas Kunar	5,360
146	کنړها	KUNARHA	14	نرني	Nari	4,848
147	کنړها	KUNARHA	15	غازی آباد	Ghazi Abad	3,006
148	لغمان	LAGHMAN	1	مرکز لغمان - مهترلام	Provincial Center Of Laghman (Mehterlam)	16,844
149	لغمان	LAGHMAN	2	قرغه نی	Qarghayee	11,141
150	لغمان	LAGHMAN	3	علینگار	Alingar	14,593
151	لغمان	LAGHMAN	4	علیشنگ	Alishing	10,798
152	لغمان	LAGHMAN	5	دولت شاه	Dawlat Shah	6,901

Annex 6c: List of districts in Afghanistan (Source: CSO)

SN	Province	Province	District Code	District	District	Households
153	نورستان	NOORISTAN	1	مرکز نورستان - پارون	Provincial Center Of Nooristan (Paroon)	1,827
154	نورستان	NOORISTAN	2	نورگرام	Noor Gram	2,357
155	نورستان	NOORISTAN	3	دواب	Duab	1,091
156	نورستان	NOORISTAN	4	وايگل	Waygal	3,489
157	نورستان	NOORISTAN	5	واما	Wama	1,371
158	نورستان	NOORISTAN	6	مندول	Mandol	2,252
159	نورستان	NOORISTAN	7	کامدیش	Kamdesh	4,672
160	نورستان	NOORISTAN	8	برگ مताल	Bargi Matal	2,729
161	بدخشان	BADAKHSHAN	1	مرکز بدخشان - فیض آباد	Provincial Center Of Badakhshan (Faiz Abad)	9,371
162	بدخشان	BADAKHSHAN	2	یفتل سفلی	Yaftal -I-Sufla	8,145
163	بدخشان	BADAKHSHAN	3	ارگو	Argo	15,958
164	بدخشان	BADAKHSHAN	4	درایم	Darayim	6,468
165	بدخشان	BADAKHSHAN	5	خاش	Khash	2,527
166	بدخشان	BADAKHSHAN	6	جرم	Jurm	8,565
167	بدخشان	BADAKHSHAN	7	وردوج	Wardooj	3,231
168	بدخشان	BADAKHSHAN	8	بهارک	Baharak	5,252
169	بدخشان	BADAKHSHAN	9	شهدا	Shuhada	4,098
170	بدخشان	BADAKHSHAN	10	کوهستان	Kohistan	3,153
171	بدخشان	BADAKHSHAN	11	یوان	Yawan	4,993
172	بدخشان	BADAKHSHAN	12	شهر بزرگ	Shahri Buzurg	8,059
173	بدخشان	BADAKHSHAN	13	کشم	Kishm	12,142
174	بدخشان	BADAKHSHAN	14	تگاب	Tagab	4,535
175	بدخشان	BADAKHSHAN	15	تاشکان	Tashkan	4,917
176	بدخشان	BADAKHSHAN	16	کران و منجان	Kiran Wa Menjan	1,607
177	بدخشان	BADAKHSHAN	17	زببک	Zebak	1,100
178	بدخشان	BADAKHSHAN	18	اشکاشم	Eshkashim	2,143
179	بدخشان	BADAKHSHAN	19	واخان	Wakhan	2,045
180	بدخشان	BADAKHSHAN	20	شینغان	Shighnan	2,962
181	بدخشان	BADAKHSHAN	21	ارغنجخواه	Arghanj Khwah	2,304
182	بدخشان	BADAKHSHAN	22	راغستان	Raghistan	5,093
183	بدخشان	BADAKHSHAN	23	خواهان	Khwahan	2,492
184	بدخشان	BADAKHSHAN	24	کوف آب	Kufab	3,579
185	بدخشان	BADAKHSHAN	25	یامگان	Yamgan	3,693
186	بدخشان	BADAKHSHAN	26	درواز بالا (نسیی)	Darwaz-I- Bala (Nesay)	4,835
187	بدخشان	BADAKHSHAN	27	درواز پائین (ما می)	Darwaz-I- Payin (Mamay)	3,437
188	بدخشان	BADAKHSHAN	28	شکی	Shiki	3,393
189	تخار	TAKHAR	1	مرکز تخار - تالقان	Provincial Center Of Takhar (Taluqan)	29,333
190	تخار	TAKHAR	2	هزار سموچ	Hazar Sumuch	1,665
191	تخار	TAKHAR	3	بهارک	Baharak	6,865
192	تخار	TAKHAR	4	خواجه غار	Khwaja Ghar	7,405
193	تخار	TAKHAR	5	بنگی	Bangi	4,712
194	تخار	TAKHAR	6	اشکمش	Eshkamesh	8,210
195	تخار	TAKHAR	7	چال	Chal	4,315
196	تخار	TAKHAR	8	نمک آب	Namak Ab	2,300
197	تخار	TAKHAR	9	فرخار	Farkhar	6,631
198	تخار	TAKHAR	10	کلفگان	Kalafgan	4,667
199	تخار	TAKHAR	11	رستاق	Rustaq	24,038
200	تخار	TAKHAR	12	چاه آب	Chahab	11,162
201	تخار	TAKHAR	13	بنگی قلعه	Yangi Qala	6,524
202	تخار	TAKHAR	14	خواجه بهاولدین	Khwaja Bahawuddin	4,633
203	تخار	TAKHAR	15	درقد	Darqad	4,353
204	تخار	TAKHAR	16	دشت قلعه	Dashti Qala	5,863
205	تخار	TAKHAR	17	ورسج	Warsaj	5,801

Annex 6c: List of districts in Afghanistan (Source: CSO)

SN	Province	Province	District Code	District	District	Households
206	بغلان	BAGHLAN	1	مرکز بغلان - پلخمری	Provincial Center Of Baghlan (Pul-I-Khumri)	28,793
207	بغلان	BAGHLAN	2	بغلان جدید	Baghlan-I-Jadeed	17,692
208	بغلان	BAGHLAN	3	دانه غوری	Dahana-I-Ghuri	7,462
209	بغلان	BAGHLAN	4	دوشی	Dushi	10,118
210	بغلان	BAGHLAN	5	خنجان	Khinjan	4,424
211	بغلان	BAGHLAN	6	اندراب	Andarab	3,096
212	بغلان	BAGHLAN	7	نهرین	Nahreen	9,613
213	بغلان	BAGHLAN	8	برکه	Burka	6,998
214	بغلان	BAGHLAN	9	تاله و برفک	Tala Wa Barfak	4,852
215	بغلان	BAGHLAN	10	پل حصار	Pul-I-Hisar	3,676
216	بغلان	BAGHLAN	11	ده صلاح	Deh Salah	4,534
217	بغلان	BAGHLAN	12	جلگه	Jalga	4,446
218	بغلان	BAGHLAN	13	خوست و فرنگ	Khost Wa Firing	8,974
219	بغلان	BAGHLAN	14	فرنگ و غارو	Firing Wa Gharu	2,448
220	بغلان	BAGHLAN	15	گوزگاه نور	Gozargah-I-Noor	1,710
221	کنندز	KUNDUZ	1	مرکز کنندز - کنندز	Provincial Center Of Kunduz (Kunduz)	33,664
222	کنندز	KUNDUZ	2	حضرت امام صاحب	Hazrati Imam Sahib	30,878
223	کنندز	KUNDUZ	3	قلعه زال	Qala-I-Zal	7,812
224	کنندز	KUNDUZ	4	چاردره	Char Darah	8,085
225	کنندز	KUNDUZ	5	علی آباد	Ali Abad	5,316
226	کنندز	KUNDUZ	6	خان آباد	Khan Abad	17,524
227	کنندز	KUNDUZ	7	دشت ارچی	Dasht-I-Archi	9,162
228	سمنگان	SAMANGAN	1	مرکز سمنگان - ایبک	Provincial Center Of Samangan (Aybak)	12,629
229	سمنگان	SAMANGAN	2	حضرت سلطان	Hazrat-I-Sultan	6,535
230	سمنگان	SAMANGAN	3	فیروز نخچیر	Feroz Nakhcheer	2,075
231	سمنگان	SAMANGAN	4	دره صوف بالا	Dara-I-Soof-I-Bala	8,931
232	سمنگان	SAMANGAN	5	دره صوف پائین	Dara-I-Soof-I-Payin	10,517
233	سمنگان	SAMANGAN	6	روی نوآب	Roi-Do-Ab	7,328
234	سمنگان	SAMANGAN	7	خرم و سارباغ	Khuram Wa Sarbagh	4,915
235	بلخ	BALKH	1	مرکز بلخ - مزار شریف	Provincial Center Of Balkh (Mazar-I-Sharif)	61,227
236	بلخ	BALKH	2	دهدادی	Dehdadi	10,012
237	بلخ	BALKH	3	نهر شاهی	Nahri Shahi	6,428
238	بلخ	BALKH	4	مارمل	Marmul	1,518
239	بلخ	BALKH	5	خلم	Khulm	8,202
240	بلخ	BALKH	6	کلدان	Kaldar	3,213
241	بلخ	BALKH	7	شورتپه	Shortepa	5,640
242	بلخ	BALKH	8	دولت آباد	Dawlat Abad	14,663
243	بلخ	BALKH	9	بلخ	Balkh	16,006
244	بلخ	BALKH	10	چار بولک	Char Bolak	11,218
245	بلخ	BALKH	11	چمتال	Chimtal	13,873
246	بلخ	BALKH	12	شولگره	Sholgara	15,189
247	بلخ	BALKH	13	چارکنت	Char Kent	5,458
248	بلخ	BALKH	14	کشنده	Kishindeh	9,788
249	بلخ	BALKH	15	زاری	Zari	8,094
250	جوزجان	JAWZJAN	1	مرکز جوزجان - شیرغان	Provincial Center Of Jawzjan (Sheberghan)	23,225
251	جوزجان	JAWZJAN	2	آقچه	Aqchah	6,641
252	جوزجان	JAWZJAN	3	فیض آباد	Faizabad	5,942
253	جوزجان	JAWZJAN	4	مردیان	Mardyan	4,282
254	جوزجان	JAWZJAN	5	منگجیک	Mingajik	5,747
255	جوزجان	JAWZJAN	6	قرقین	Qarqin	3,581
256	جوزجان	JAWZJAN	7	خمیاب	Khamyab	2,335
257	جوزجان	JAWZJAN	8	قوش تپه	Qush Tepa	4,158
258	جوزجان	JAWZJAN	9	درزآب	Darزاب	5,781
259	جوزجان	JAWZJAN	10	خواجه نوکوه	Khawaja Dukoh	3,340
260	جوزجان	JAWZJAN	11	خانقا	Khanaqa	5,055
261	سرپل	SAR-I- PUL	1	مرکز سرپل - سرپل	Provincial Center Of Sar-I-Pul (Sar-I-Pul)	20,085
262	سرپل	SAR-I- PUL	2	سوزمه قلعه	Sozma Qala	6,140
263	سرپل	SAR-I- PUL	3	صیاد	Sayyad	8,574
264	سرپل	SAR-I- PUL	4	کوهستانات	Kohistanat	12,342
265	سرپل	SAR-I- PUL	5	بلخاب	Balkhab	8,488
266	سرپل	SAR-I- PUL	6	سنگ چارک	Sangcharak	15,491
267	سرپل	SAR-I- PUL	7	گوسفندی	Gosfandi	7,187

Annex 6c: List of districts in Afghanistan (Source: CSO)

SN	Province	Province	District Code	District	District	Households
268	فاریاب	FARYAB	1	مرکز فاریاب - میمنه	Provincial Center Of Faryab (Maimana)	11,235
269	فاریاب	FARYAB	2	پشتون کوت	Pashtun Kot	28,646
270	فاریاب	FARYAB	3	خواجه سبز پوش ولی	Khwaja Sabz Poshi Wali	7,861
271	فاریاب	FARYAB	4	المار	Almar	10,343
272	فاریاب	FARYAB	5	قیصار	Qaisar	18,113
273	فاریاب	FARYAB	6	کوہستان	Kohistan	8,611
274	فاریاب	FARYAB	7	گوزیوان	Gurziwan	11,856
275	فاریاب	FARYAB	8	بل چراغ	Bilchiragh	6,927
276	فاریاب	FARYAB	9	شیرین تگاب	Shirin Tagab	11,745
277	فاریاب	FARYAB	10	دولت آباد	Dawlat Abad	7,314
278	فاریاب	FARYAB	11	قرم قل	Qaram Qul	2,407
279	فاریاب	FARYAB	12	خان چارباغ	Khani Charbagh	2,864
280	فاریاب	FARYAB	13	اندخوی	Andkhoy	6,757
281	فاریاب	FARYAB	14	قرغان	Qurghan	3,816
282	بادغیس	BADGHIS	1	مرکز بادغیس - قلعه نو	Provincial Center Of Badghis (Qala-I-Now)	11,799
283	بادغیس	BADGHIS	2	مقر	Muqur	3,615
284	بادغیس	BADGHIS	3	ابکماری	Ab Kamari	14,530
285	بادغیس	BADGHIS	4	قادیس	Qadis	15,342
286	بادغیس	BADGHIS	5	جوند	Jawand	14,043
287	بادغیس	BADGHIS	6	غورماچ	Ghormach	8,537
288	بادغیس	BADGHIS	7	بالا مرغاب	Bala Murghab	19,285
289	هرات	HERAT	1	مرکز هرات - هرات	Provincial Center Of Herat (Herat)	66,760
290	هرات	HERAT	2	انجیل	Enjil	39,948
291	هرات	HERAT	3	نظام شهید (گنره)	Nizam-I-Shahid (Guzara)	22,601
292	هرات	HERAT	4	پشتون زرغون	Pashtun Zarghun	15,963
293	هرات	HERAT	5	کرخ	Karrukh	9,403
294	هرات	HERAT	6	کوشک (رباط سنگی)	Kushk (Rubat-I-Sangi)	23,044
295	هرات	HERAT	7	گلران	Gulran	18,216
296	هرات	HERAT	8	کوسان	Kohsan	9,916
297	هرات	HERAT	9	غوریان	Ghoryan	15,331
298	هرات	HERAT	10	زنده جان	Zendajan	10,012
299	هرات	HERAT	11	ادرسکن	Adraskan	10,428
300	هرات	HERAT	12	شیندند	Shindand	29,066
301	هرات	HERAT	13	فرسی	Fersi	5,658
302	هرات	HERAT	14	اوبه	Obe	14,439
303	هرات	HERAT	15	چشت شریف	Chishti Sharif	4,991
304	هرات	HERAT	16	کوشک کهنه	Kushk-I-Kuhnz	7,297
305	فراه	FARAH	1	مرکز فراه - فراه	Provincial Center Of Farah (Farah)	17,663
306	فراه	FARAH	2	پشت رود	Pushtrud	6,120
307	فراه	FARAH	3	خاک سفید	Khak-I-Safed	5,980
308	فراه	FARAH	4	انار دره	Anar Dara	4,354
309	فراه	FARAH	5	قلعه کاه	Qala-I-Kah	5,032
310	فراه	FARAH	6	شیب کوه	Shibkoh	3,959
311	فراه	FARAH	7	لاش جوبین	Lash-I-Juwayn	3,655
312	فراه	FARAH	8	بکواه	Bakwa	6,102
313	فراه	FARAH	9	بالا بلوک	Bala Buluk	12,457
314	فراه	FARAH	10	گلستان	Gulistan	8,572
315	فراه	FARAH	11	پرچمن	Pur Chaman	10,615
316	نیمروز	NIMROZ	1	مرکز نیمروز - زرنج	Provincial Center Of Nimroz (Zaranj)	7,955
317	نیمروز	NIMROZ	2	کنگ	Kang	2,227
318	نیمروز	NIMROZ	3	چار برجک	Char Burjak	1,325
319	نیمروز	NIMROZ	4	اصل چخانسور	Asl-I-Chakhansur	1,900
320	نیمروز	NIMROZ	5	خاشرود	Khashrod	5,287

Annex 6c: List of districts in Afghanistan (Source: CSO)

SN	Province	Province	District Code	District	District	Households
321	هلمند	HELMAND	1	مرکز هلمند - لشکرگاه	Provincial Center Of Helmand (Lashkargah)	29,657
322	هلمند	HELMAND	2	نهرسراج	Nahr-I-Saraj	23,331
323	هلمند	HELMAND	3	نادعلی	Nad Ali	36,437
324	هلمند	HELMAND	4	ناوه بارکزایی	Nawa-I- Barikzayi	12,421
325	هلمند	HELMAND	5	گرم سیر	Garm Ser	17,795
326	هلمند	HELMAND	6	سنگین قلعه	Sangin Qala	8,566
327	هلمند	HELMAND	7	کجکی	Kajaki	15,831
328	هلمند	HELMAND	8	باغران	Baghran	18,780
329	هلمند	HELMAND	9	موسی قلعه	Musa Qala	14,298
330	هلمند	HELMAND	10	نوزاد	Nawzad	15,770
331	هلمند	HELMAND	11	واشیر	Washer	3,931
332	هلمند	HELMAND	12	ریگ خان نشین	Reg-I- Khan Nishin	2,685
333	هلمند	HELMAND	13	دیشو	Dishu	3,957
334	کندهار	KANDAHAR	1	مرکز کندهار - کندهار	Provincial Center Of Kandahar (Kandahar)	65,218
335	کندهار	KANDAHAR	2	دامان	Daman	4,381
336	کندهار	KANDAHAR	4	ارغنداب	Arghandab	8,205
337	کندهار	KANDAHAR	5	خاک ریز	Khakrez	2,323
338	کندهار	KANDAHAR	7	میوند	Maiwand	9,320
339	کندهار	KANDAHAR	8	ژری	Zhire	15,215
340	کندهار	KANDAHAR	9	پنجوایی	Panjwayee	10,760
341	کندهار	KANDAHAR	12	سپین بولدک	Spin Boldak	22,551
342	زابل	ZABUL	1	مرکز زابل - قلات	Provincial Center Of Zabol (Qalat)	5,003
343	زابل	ZABUL	2	شاه جوی	Shah Joi	10,419
344	زابل	ZABUL	6	میزان	Mizan	2,804
345	زابل	ZABUL	7	ترنگ و جلدک	Tarank Wa Jaldak	2,960
346	زابل	ZABUL	8	شینکی	Shinkai	3,562
347	زابل	ZABUL	9	اتغر	Atghar	2,100
348	زابل	ZABUL	10	شمل زانی	Shemel Zayi	5,006
349	زابل	ZABUL	11	نوبهار	Naw Bahar	3,452
350	ارزگان	UROZGAN	1	مرکز ارزگان - ترینکوت	Provincial Center Of Urozgan (Tirinkot)	16,933
351	ارزگان	UROZGAN	2	چوره	Chora	10,198
352	ارزگان	UROZGAN	3	خاص ارزگان	Khas Urozgan	6,469
353	ارزگان	UROZGAN	4	شهید حساس	Shahidhassas	5,286
354	ارزگان	UROZGAN	5	دهراود	Dehraoud	7,087
355	غور	GHOR	1	مرکز غور - چغچران	Provincial Center of Ghor (Chighcheran)	21,753
356	غور	GHOR	2	دولتیار	Dawlatyar	5,422
357	غور	GHOR	3	چار صده	Char Sada	5,196
358	غور	GHOR	4	شهرک	Shahrak	11,165
359	غور	GHOR	5	دولینه	Duleena	6,661
360	غور	GHOR	6	پسابند	Pasaband	17,186
361	غور	GHOR	7	لعل و سرچنگل	Lal Wa Sarjangal	15,095
362	غور	GHOR	8	تولک	Tulak	8,594
363	غور	GHOR	9	ساجر	Saghar	5,853
364	غور	GHOR	10	تیوره	Taywara	15,776
365	بامیان	BAMYAN	1	مرکز بامیان - بامیان	Provincial Center of Bamyan (Bamyan)	11,725
366	بامیان	BAMYAN	2	شبر	Shebar	3,887
367	بامیان	BAMYAN	3	سیغان	Saighan	3,793
368	بامیان	BAMYAN	4	کهمرد	Kahmard	4,607
369	بامیان	BAMYAN	5	یکاولنگ	Yakawlang	10,755
370	بامیان	BAMYAN	6	پنجاب	Panjab	8,080
371	بامیان	BAMYAN	7	ورث	Waras	13,911
372	پنجشیر	PANJSHER	1	مرکز پنجشیر - بازارک	Provincial Center of Panjsher (Bazarak)	2,384
373	پنجشیر	PANJSHER	2	رخه	Rukha	1,622
374	پنجشیر	PANJSHER	3	عنابه	Unaba	2,077
375	پنجشیر	PANJSHER	4	دره	Darah	3,142
376	پنجشیر	PANJSHER	5	حصه اول (خنج)	Hissa-I-Awal (Khinj)	3,531
377	پنجشیر	PANJSHER	6	شتل	Shutul	1,884
378	پنجشیر	PANJSHER	7	پریان	Paryan	1,915
379	دایکندی	DAYKUNDI	1	مرکز دایکندی - نیلی	Provincial Center Of Daykundi (Nili)	5,667
380	دایکندی	DAYKUNDI	2	شهرستان	Shahristan	12,114
381	دایکندی	DAYKUNDI	3	میرامور	Miramor	14,560
382	دایکندی	DAYKUNDI	4	اشترلی	Ishterlai	10,105
383	دایکندی	DAYKUNDI	5	سنگ تخت	Sang-I-Takht	8,217
384	دایکندی	DAYKUNDI	6	خدیر	Khedir	7,522
385	دایکندی	DAYKUNDI	7	کجران	Kejran	4,685
386	دایکندی	DAYKUNDI	8	گیتی	Geti	11,388
387	دایکندی	DAYKUNDI	9	گیزاب	Gizab	10,819

Annex 7: Progress in plant protection (till third week of May, 2010)

No	Pest	Admin Area Covered (no.)		Plan		Progress		Protection		Persons involved			Transportation means			Kind of Control		Secondary Organization	Implementer	Monitor	Controller
		Province	District	Ha.	Number	Ha.	Sapling	Started	Ends	Professional staff	Local people	Total	Govt. Car	Hired Car	Motorcycle	Chemical	Mechanical				
1	Locust	17 ¹	62	115000		99678		4 Apr	5 Jun	88	880	968	15	42			AECID	Provinces and Plant Protection	MAIL and Finance Department	Department of Evaluation	
2	Sun pest	9 ²	37	42000				4 Apr	5 May	53	530	583		7			International Relief Development & AECID				
3	Brown tail moth	13 ³	37		2130000			4 Apr	5 May	59	590	649		4							
4	Colorado Potato Beetle	6 ⁴	29	5500				24 Apr	20 Jun	18	180	198		3			FAO & Mercy Corps				
5	Melon fly	11 ⁵	66	60000				22 May	21 Aug	77	770	847		2			AECID				
Total			231	222500	2130000	99678	1314049			295	2950	3245	15	58							

Source: Plant Protection and Quarantine Department, MAIL

¹ Faryab, Jawzjan, Sar-e-pul, Balkh, Samangan, Baghlan, Kunduz, Takhar, Badakhshan, Hirat, Badghis, Ghor, Bamyán, Kabul, Logar, Wardak and Nangarhar

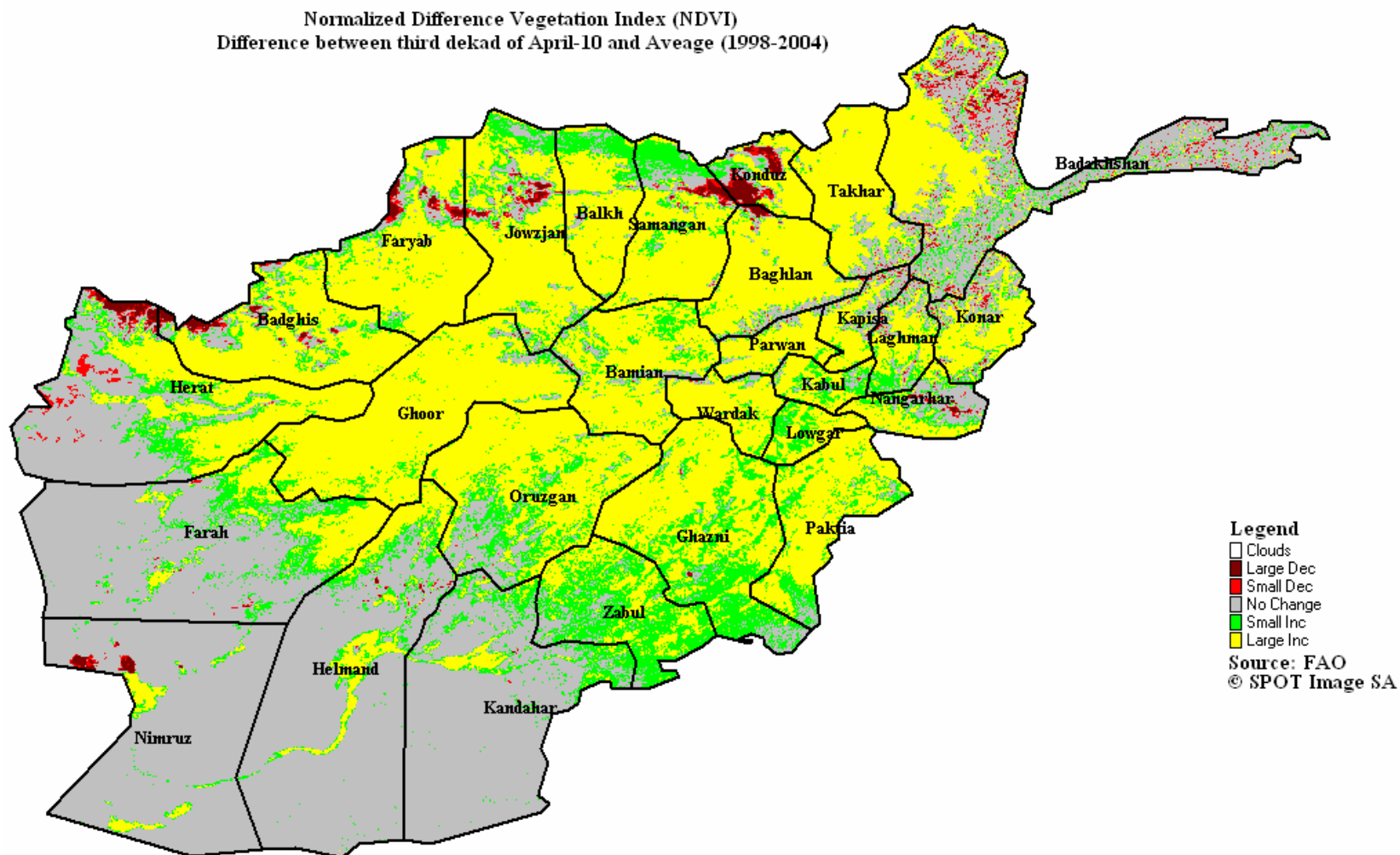
² Jawzjan, Sar-e-pul, Balkh, Samangan, Hirat, Faryab, Badghis, Ghor and Helmand

³ Balkh, Takhar, Badakhshan, Farah, Bamyán, Kabul, Parwan, Panjshir, Kapisa, Maidan Wardak, Ghazni, Nooristan and Daikundy

⁴ Samangan, Baghlan, Kunduz, Takhar, Badakhshan, and Bamyán

⁵ Jawzjan, Sar-e-pul, Balkh, Samangan, Baghlan, Kunduz, Takhar, Badakhshan, Hirat, Faryab and Badghis

Annex 8: Normalized Difference Vegetation Index (NDVI) in 21-30 April of 2010 compared to average



Annex 9a: Retail market prices of agricultural commodity (Afs/Kg.) in April 2010

Commodity	Region	Reporting month	Last Month	Last year same month	% change on	
					Last month	Last year same month
					(i.e. Apr 10)	(i.e. Mar 10)
Wheat	North	11.6	14.4	18.0	-19.4	-35.6
Wheat	North-East	11.3	12.5	17.5	-10.0	-35.7
Wheat	West	10.3	12.0	17.7	-13.9	-41.5
Wheat	West-Central	16.5	17.0	26.5	-2.9	-37.7
Wheat	Central	13.5	13.5	18.7	0.0	-27.7
Wheat	South	15.5	16.0	20.0	-3.1	-22.5
Wheat	East	15.5	16.3	19.5	-4.6	-20.5
Wheat	South-West	16.7	16.7	22.7	0.0	-26.5
Wheat	Overall	13.9	14.8	19.8	-6.0	-29.8
Beef	Overall	159.5	158.7	140.1	0.5	13.8
Mutton	Overall	239.2	235.2	194.6	1.7	22.9
Chicken	Overall	106.4	111.2	107.8	-4.3	-1.3
Agri. Labor	Overall	238.3	223.7	196.8	6.5	21.1
Urea	Overall	16.5	16.8	18.5	-2.0	-10.5
DAP	Overall	33.8	34.4	37.0	-1.9	-8.8

Annex 9b: Prices of wheat, beef and mutton on the 15th May 2010

Commodity	Region	Price (Afs/kg)		
		Wheat	Beef	Mutton
Wheat	North	11.4	170.0	226.0
Wheat	North-East	10.8	175.0	232.5
Wheat	West	10.0	185.0	291.7
Wheat	West-Central	15.0	155.0	210.0
Wheat	Central	13.2	152.5	251.7
Wheat	South	15.3	140.8	236.8
Wheat	East	14.8	146.3	198.3
Wheat	South-West	16.7	178.3	270.8
Wheat	Overall	13.5	163.2	242.1

Annex 9c: Wholesale market price of wheat in Peshawar (Rs/40 Kg.)

May 2010	Apr 2010	Mar 2010	Feb 2010	Jan 2010	Dec 2009	Nov 2009	Oct 2009
1,000	1,002	811	934	931	893	650	740

Annex 9d: Price of wheat in the international market, 2008-2010

Description	Wheat fob prices (US\$/tonne)		
	Argentina up river	US Hard Red Winter (HRW)	US Soft Red Winter (SRW)
Average price in 2008	288.80	344.42	268.17
Average price in 2009	218.75	235.58	185.67
Average price in 2010	227.80	206.00	193.20
% change in price in 2010 on 2009	4.1	-12.6	4.1